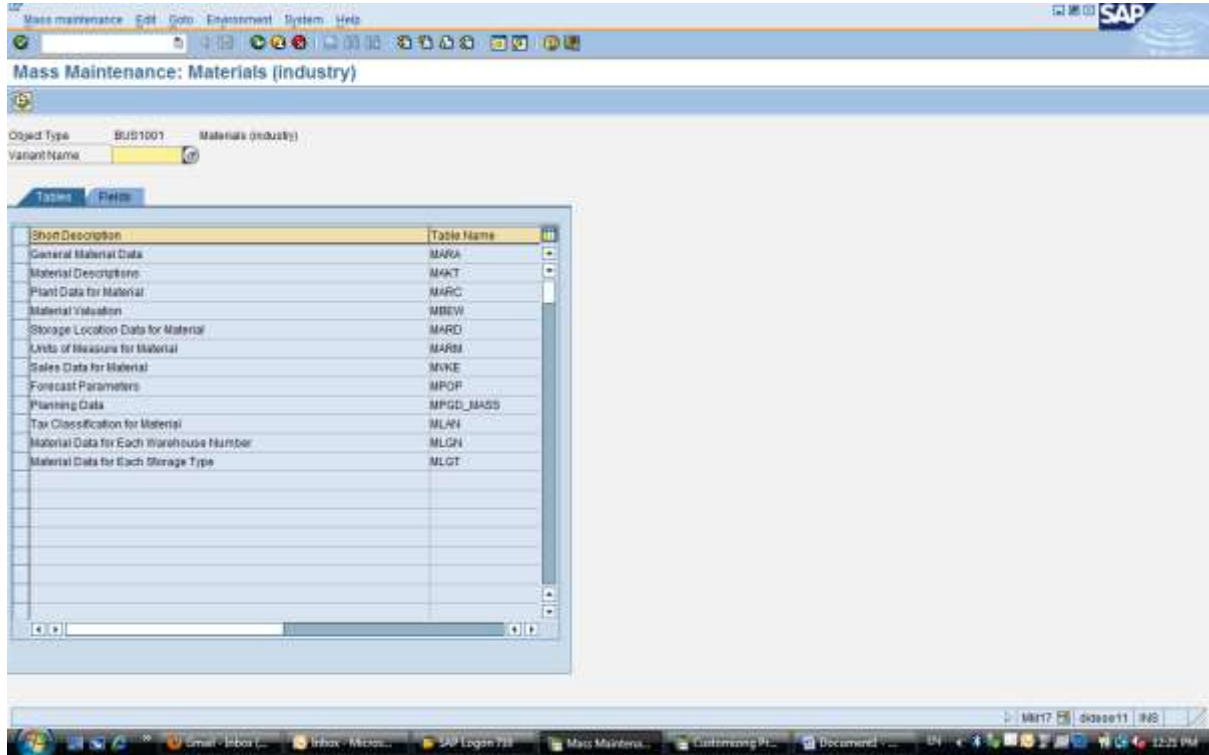


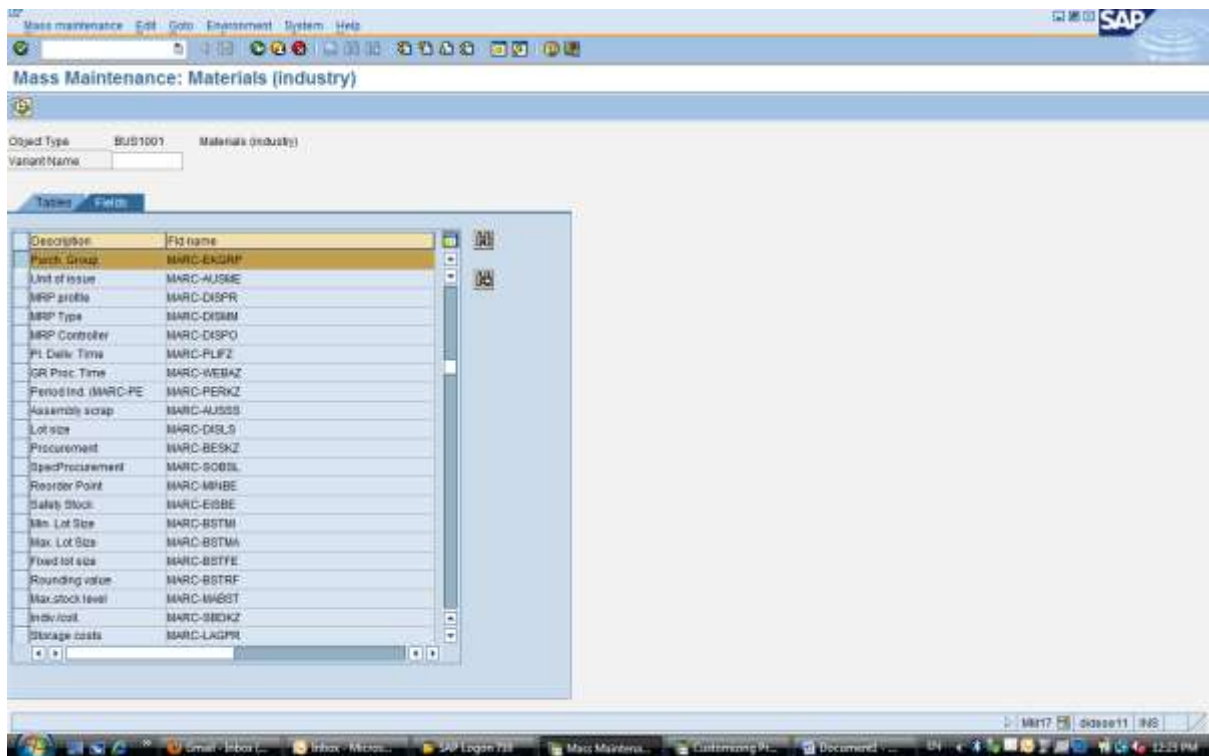
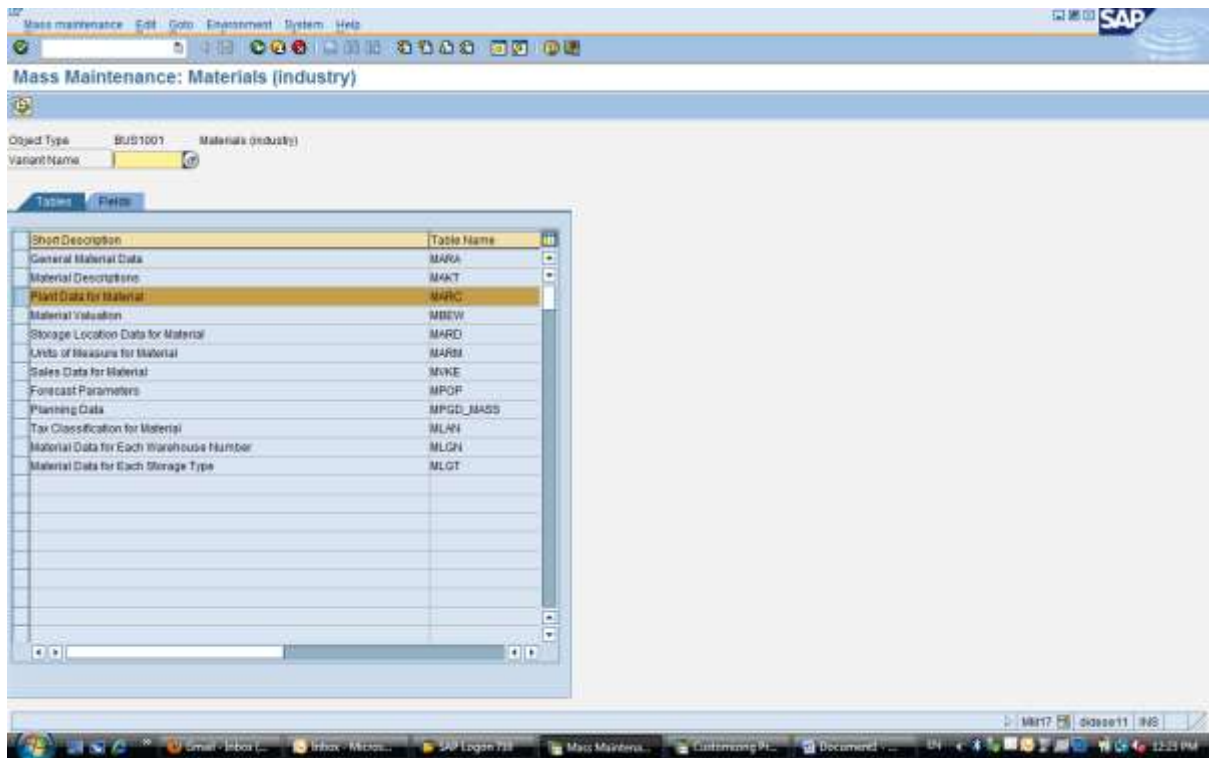
Mass maintenance

Go to MM17



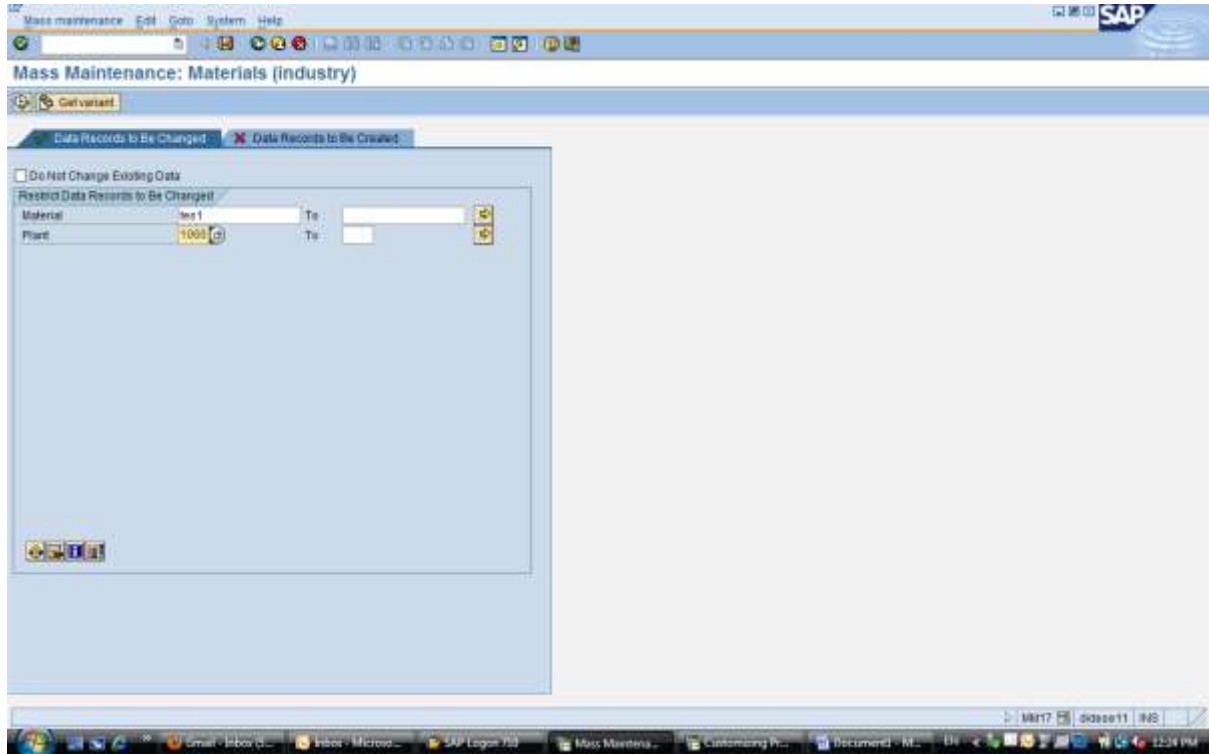
Select the table & Field which you want to maintain using Mass maintenance

For example MARC – Plant level data and Field EKGRP – Purchasing grp

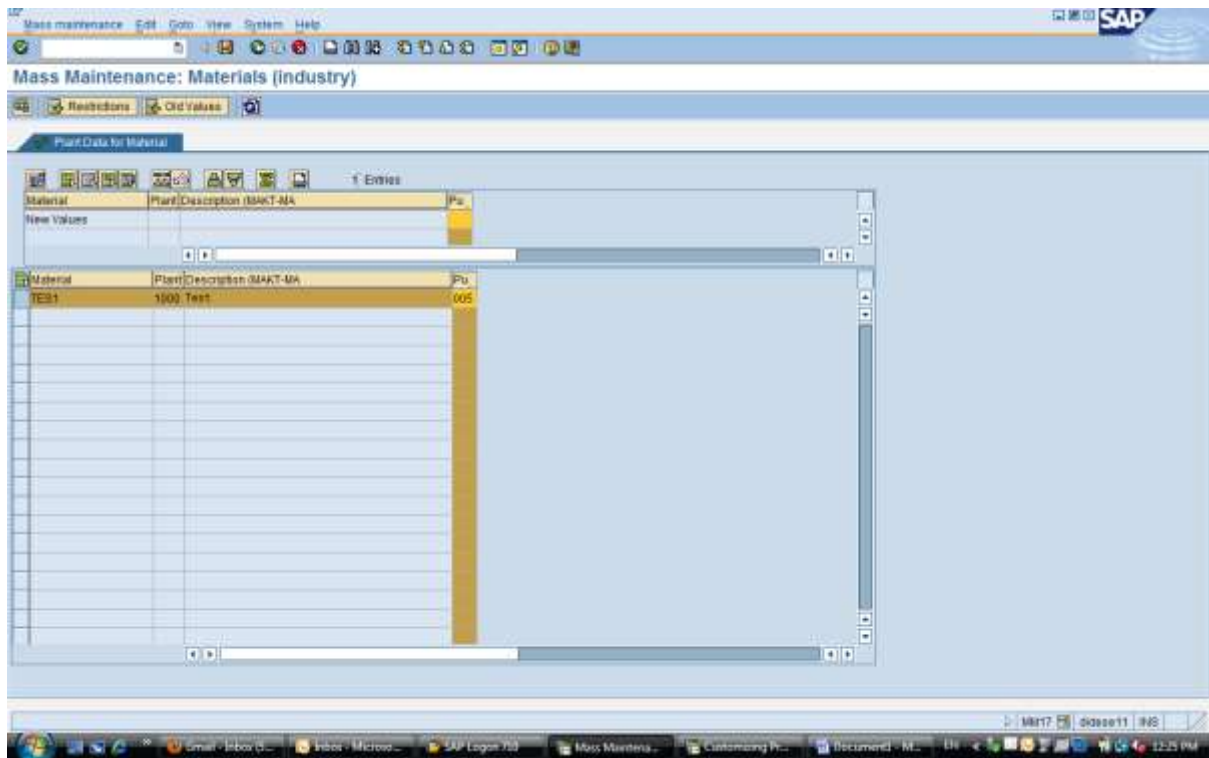


Press Execute


Key in the Material and Plant. If you have more than one data use Multiple selection to copy from excel and paste.



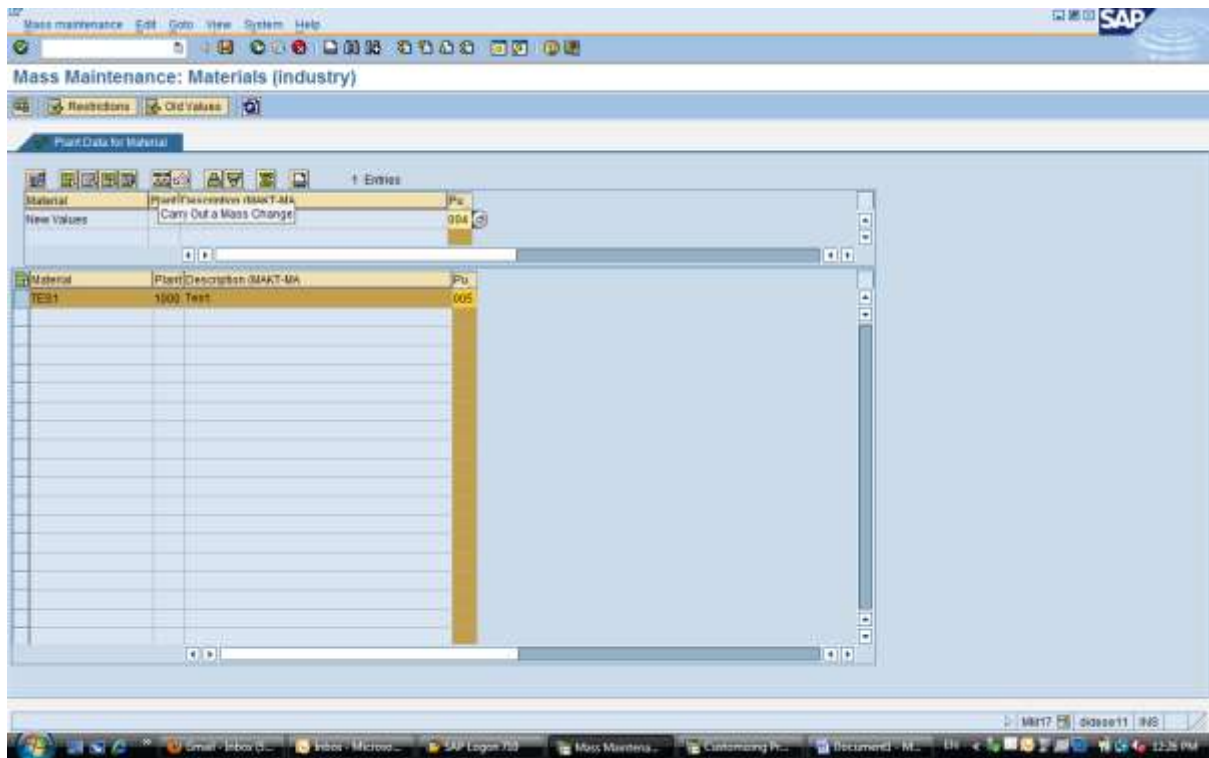
Press Execute



You can see the existing value in the bottom section and the new value to be changed in top section

Enter the new value and Press  carry out

Mass maintenance button then save the entries. System will update the table directly.



After saving you will get the result as message. If it is green it is successful.

