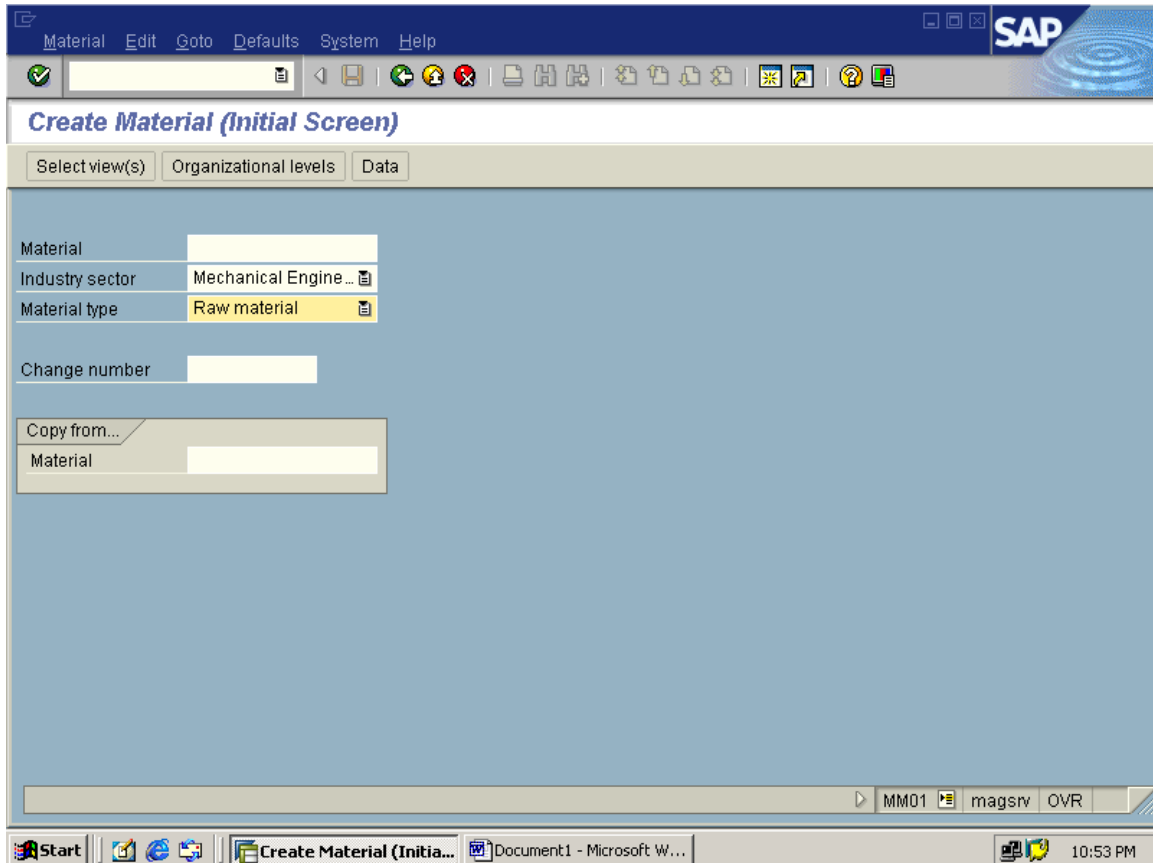
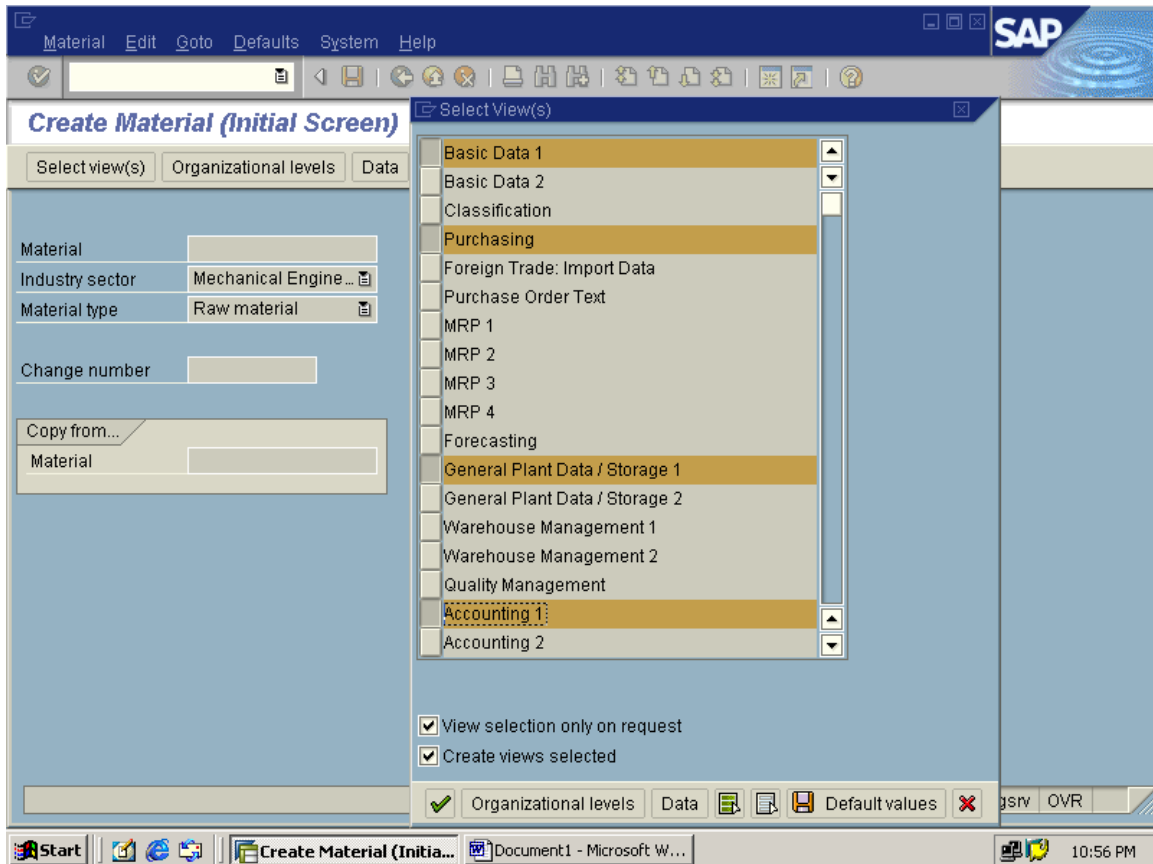


Create Material Master: Tcode- MM01

Select Industry sector, Material type



Click on Select views button on Application tool bar – For selecting the views



click on Organization levels – to select plant and storage location for which we need to maintain the information

Create Material (Initial Screen)

Select view(s) Organizational levels Data

Material	
Industry sector	Mechan
Material type	Raw m
Change number	
Copy from...	
Material	

Organizational Levels

Organizational levels

Plant	1000	muthu&co
Stor. location	0001	MUTHU KUMAR

Org. levels/profiles only on request

Select view(s) Default values

Create Material 1088 (Raw material)

Additional data Organizational levels Check screen data

Basic data 1 Basic data 2 Classification Purchasing Foreign trade i...

Material 1088

General data

Base unit of measure	<input checked="" type="checkbox"/>	Material group	<input checked="" type="checkbox"/>
Old material number		Ext. matl group	
Division		Lab./office	
Product allocation			
X-plant matl status		Valid from	
<input type="checkbox"/> Assign effect. vals		GenitemCatGroup	

Dimensions/EANs

Gross weight		Weight unit	
Net weight			
Volume		Volume unit	
Size/dimensions			

MM01 magsrv OVR

Create Material IRON ORE (Raw material)

Additional data Organizational levels Check screen data

Basic data 1 Basic data 2 Classification Purchasing Foreign trade i...

Material IRON ORE Iron Ore Grade - A

General data

Base unit of measure	T0	Material group	00101
Old material number		Ext. matl group	
Division		Lab./office	
Product allocation			
X-plant matl status		Valid from	
<input type="checkbox"/> Assign effect. vals		GenitemCatGroup	

Dimensions/EANs

Gross weight		Weight unit	
Net weight			
Volume		Volume unit	
Size/dimensions			

Create Material IRON ORE (Raw material)

Additional data Organizational levels Check screen data

Classification Purchasing Foreign trade import Purchase order text

Material **IRON ORE** Iron Ore Grade - A

Plant **1000** Werk Hamburg

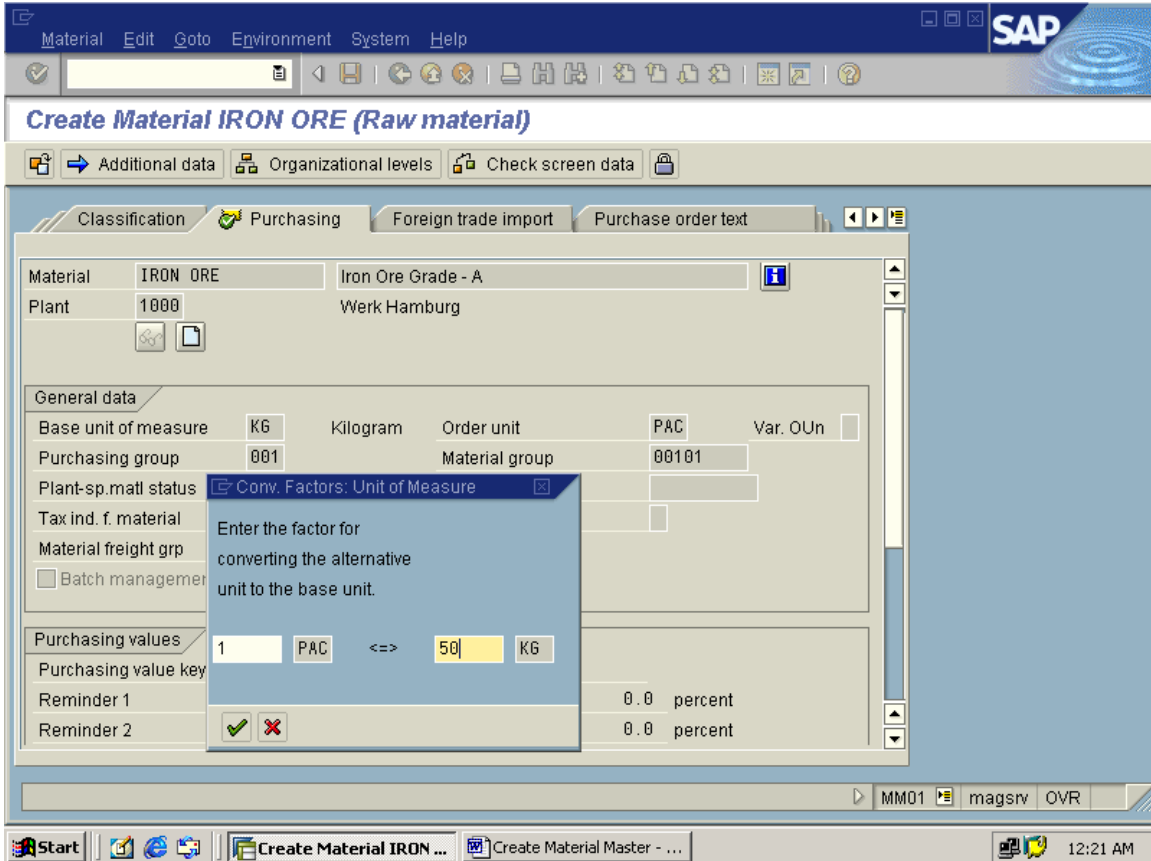
General data

Base unit of measure	T0	Kilogram	Order unit	CAR	Var. OUn
Purchasing group	001		Material group	00101	
Plant-sp.matl status			Valid from		
Tax ind. f. material			Discount in kind		
Material freight grp			<input type="checkbox"/> Autom. PO		
<input type="checkbox"/> Batch management					

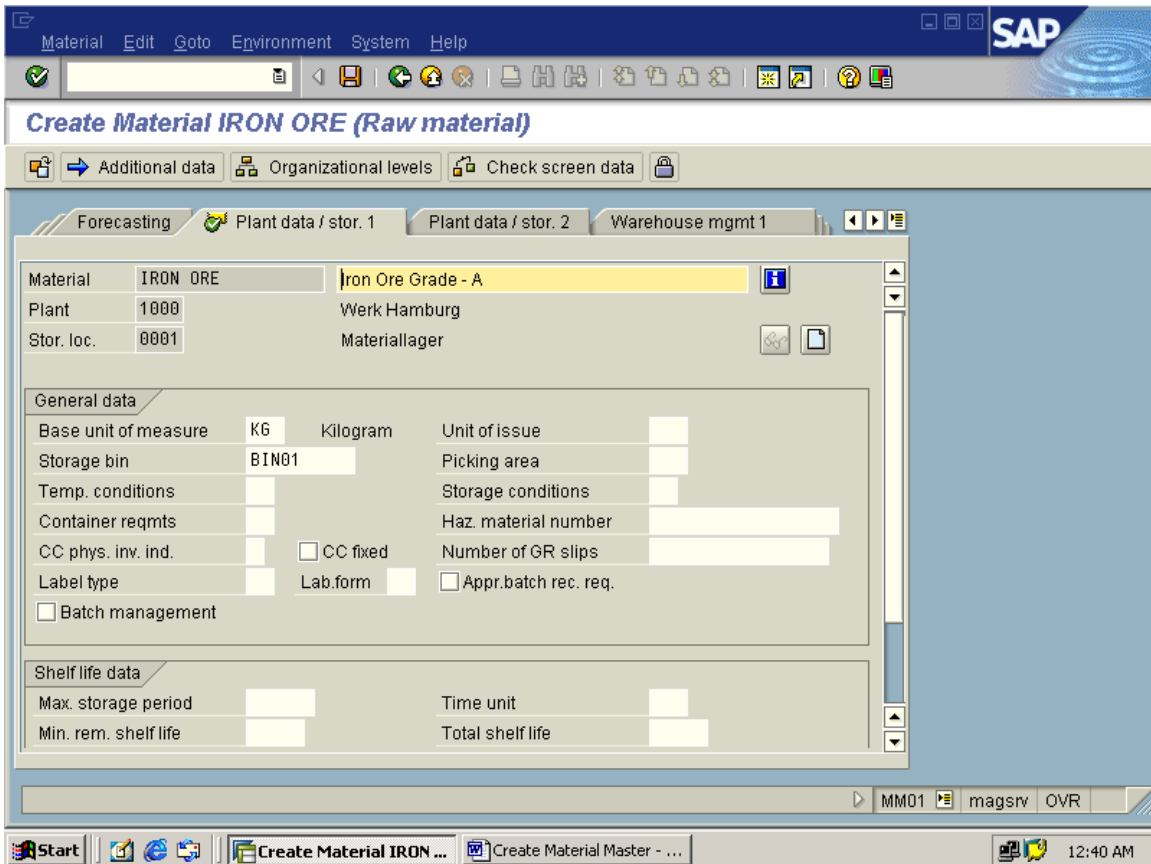
Purchasing values

Purchasing value key	5	Shipping instructs.			
Reminder 1	10	days	Underdel. tolerance	0.0	percent
Reminder 2	20	days	Overdeliv. tolerance	0.0	percent

MM01 magsrv OVR



THEN PRESS ENTER



then press enter

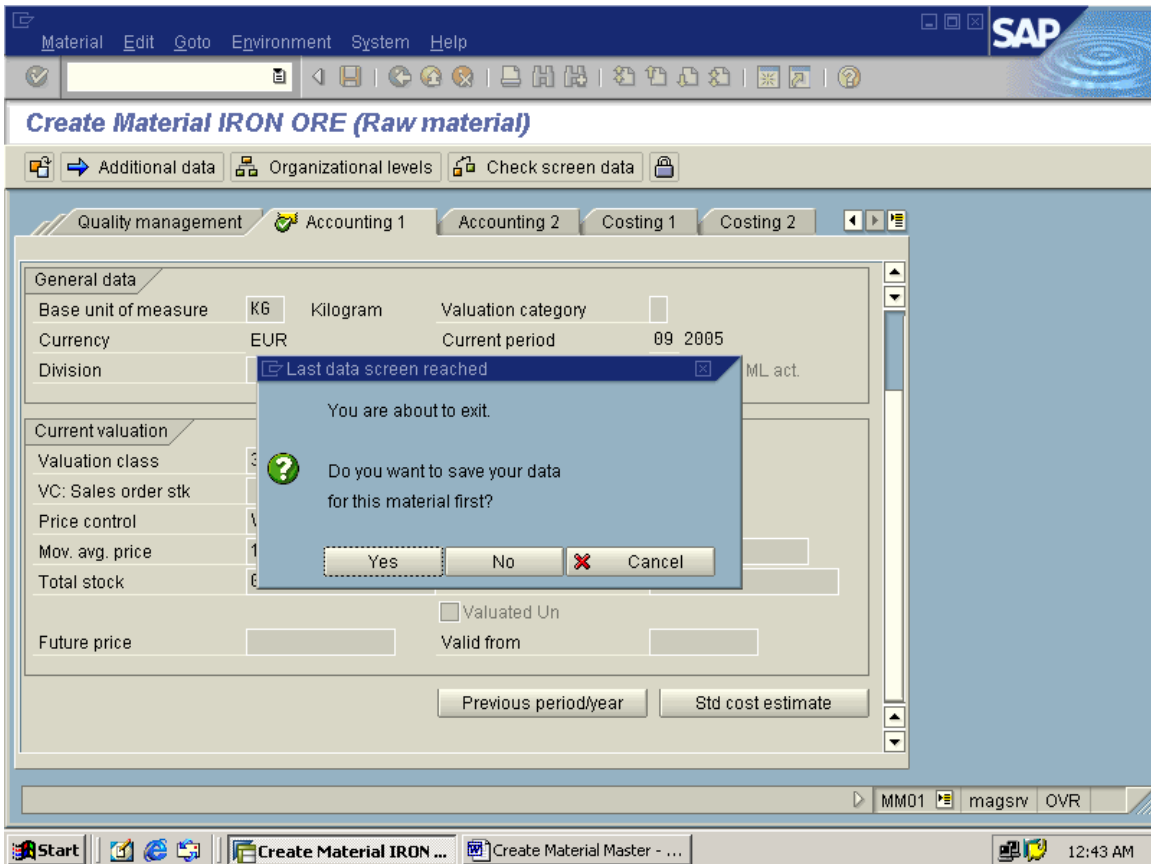
Create Material IRON ORE (Raw material)

Additional data Organizational levels Check screen data

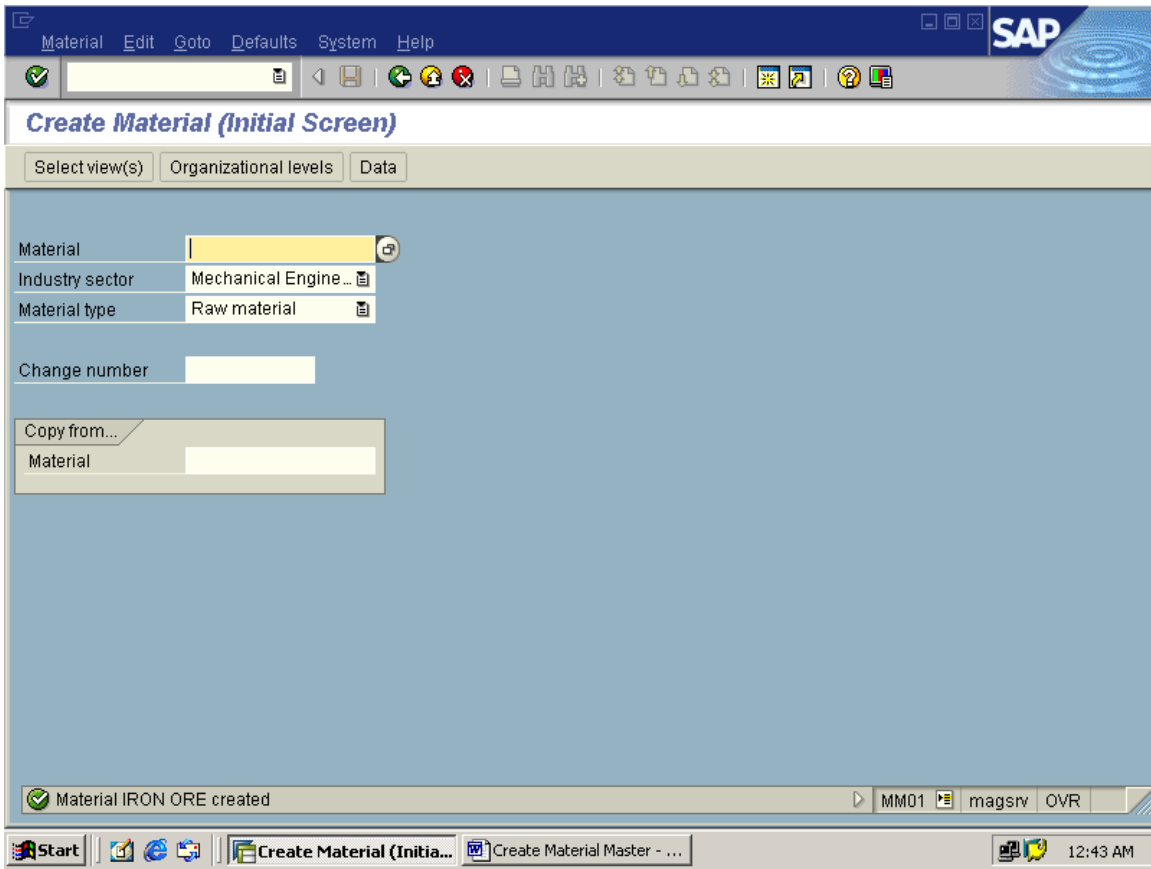
Quality management Accounting 1 Accounting 2 Costing 1 Costing 2

Material	IRON ORE	Iron Ore Grade - A
Plant	1000	Werk Hamburg
General data		
Base unit of measure	K6 Kilogram	Valuation category
Currency	EUR	Current period 09 2005
Division		Price determ. <input type="checkbox"/> ML act.
Current valuation		
Valuation class	3000	
VC: Sales order stk		Proj. stk val. class
Price control	V	Price unit 1
Mov. avg. price	1,000.00	Standard price
Total stock	0	Total value 0.00
<input type="checkbox"/> Valuated Un		

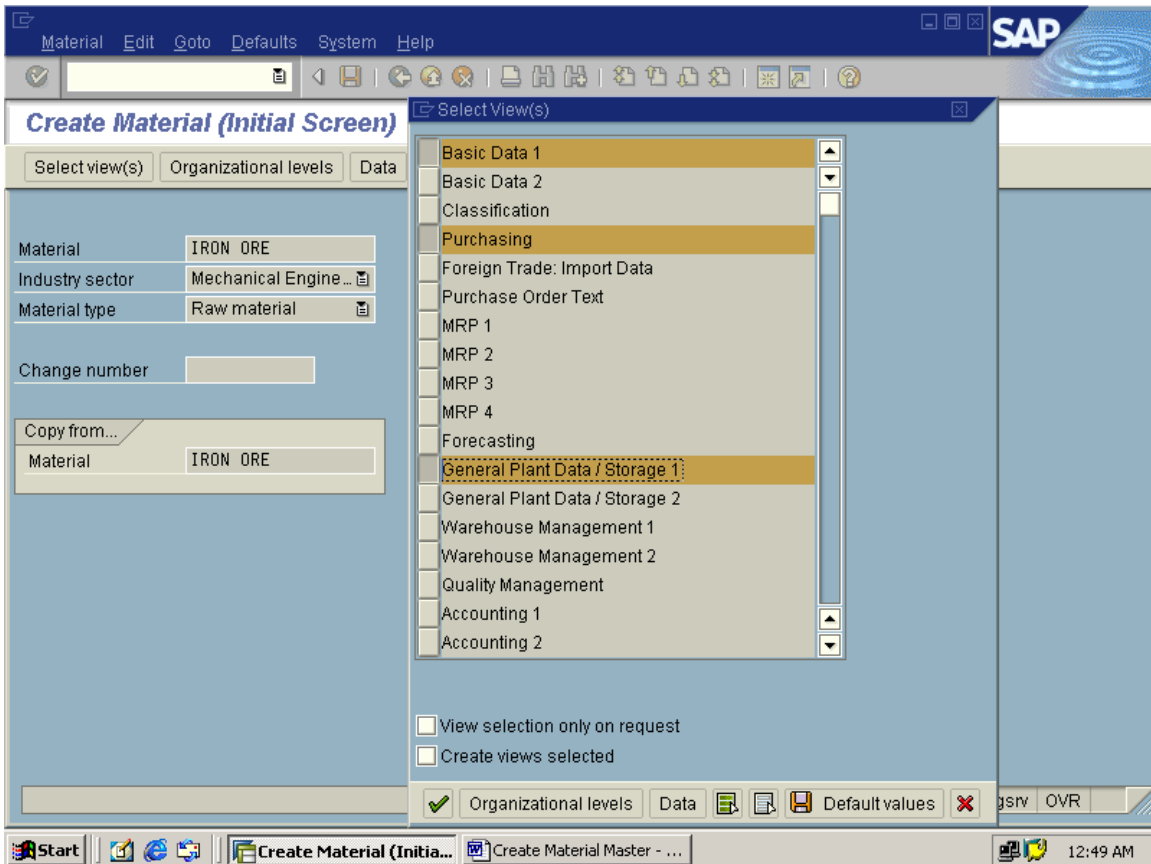
MM01 magsrv OVR



click on Yes



Extending the material information to the different plants: MM01



CLICK ON ORGANISATION LEVELS

Create Material (Initial Screen)

Select view(s) Organizational levels Data

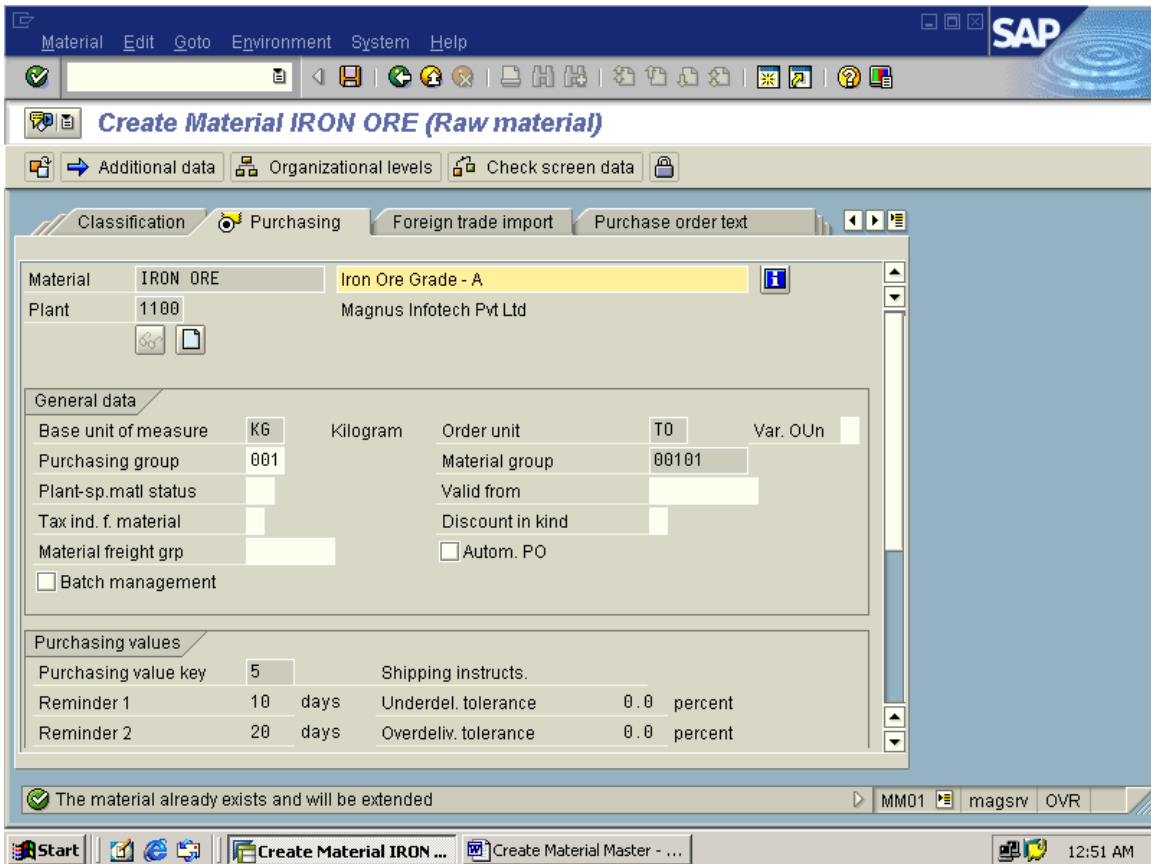
Material	IRON C
Industry sector	Mechan
Material type	Raw m
Change number	
Copy from...	IRON C

Organizational Levels

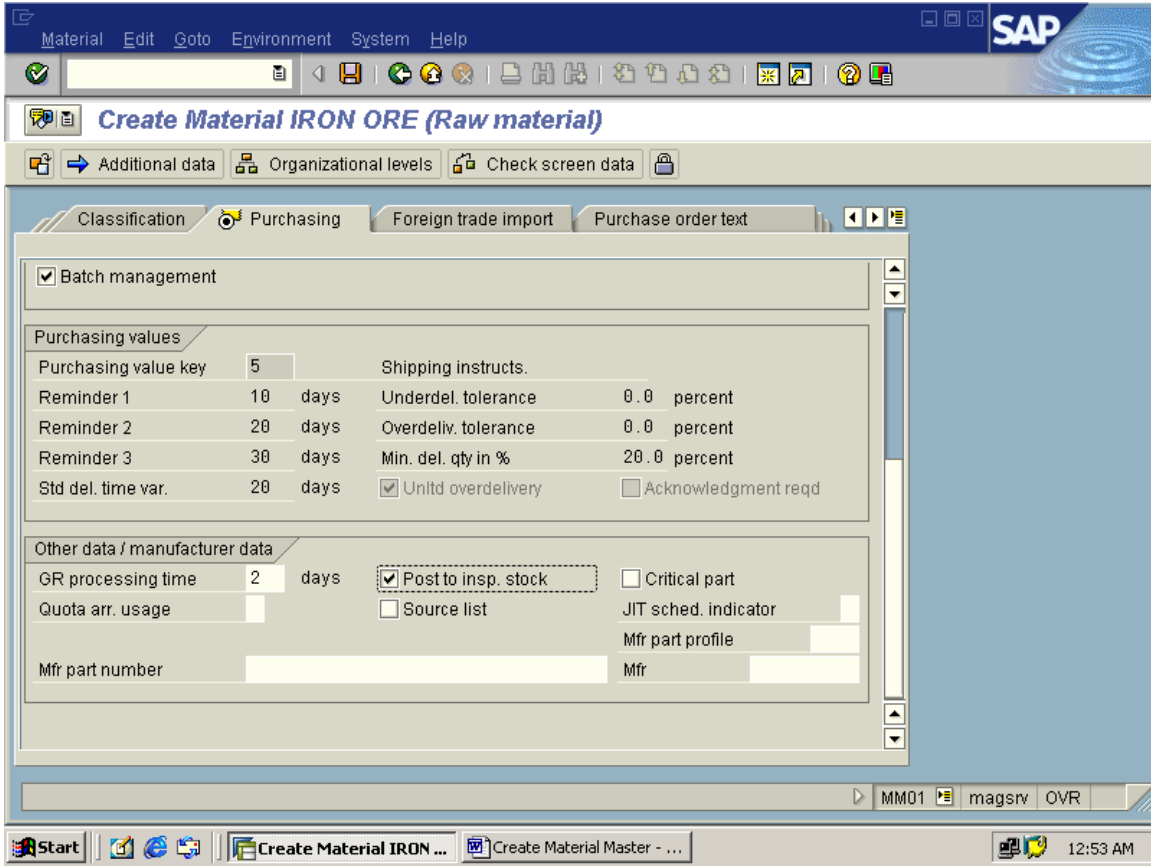
Plant	1100	muthu&co	Copy from
Stor. location	0002	MUTHU KUMAR	1000
			0001

Org. levels/profiles only on request

Select view(s) Default values



CHANGE THE DATA IF REQUIRED



PRESS ENTER

Create Material IRON ORE (Raw material)

Additional data Organizational levels Check screen data

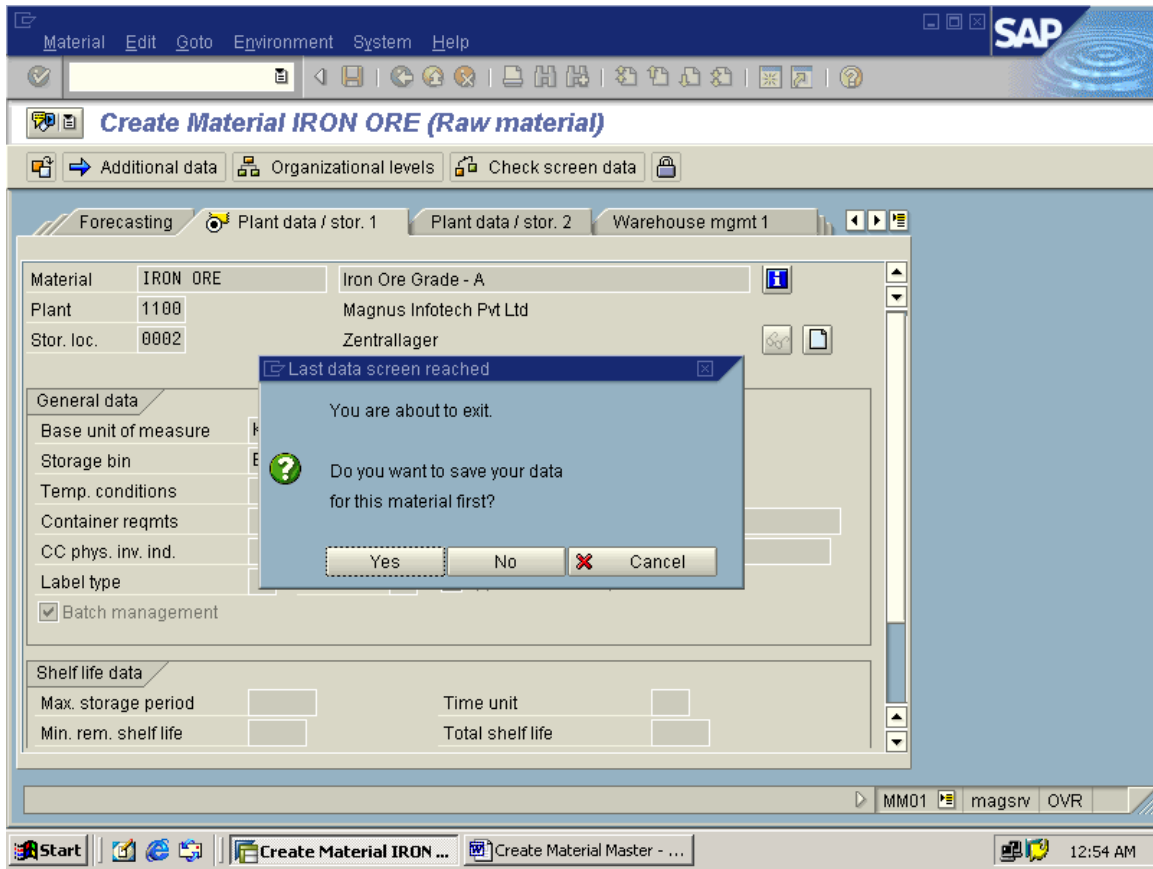
Forecasting Plant data / stor. 1 Plant data / stor. 2 Warehouse mgmt 1

Material	IRON ORE	Iron Ore Grade - A
Plant	1100	Magnus Infotech Pvt Ltd
Stor. loc.	0002	Zentrallager

General data			
Base unit of measure	K6	Kilogram	Unit of issue
Storage bin	BIN10		Picking area
Temp. conditions			Storage conditions
Container reqmts			Haz. material number
CC phys. inv. ind.	<input type="checkbox"/>	CC fixed	Number of GR slips
Label type		Lab.form <input type="checkbox"/>	<input type="checkbox"/> Appr.batch rec. req.
<input checked="" type="checkbox"/> Batch management			

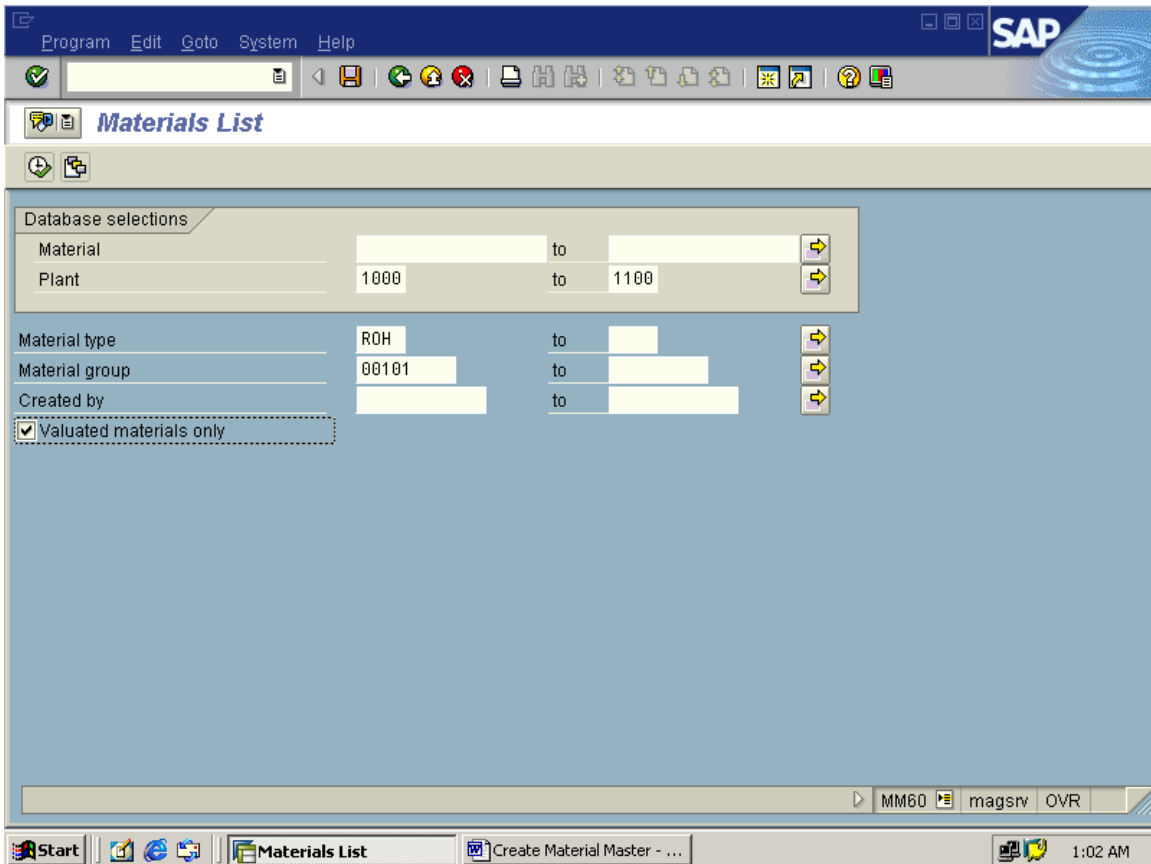
Shelf life data			
Max. storage period		Time unit	
Min. rem. shelf life		Total shelf life	

MM01 magsrv OVR



To display the list of materials created: MM60

To display the materials which are maintained with Accounting information only



then execute

SAP

List Edit Goto System Help

Materials List

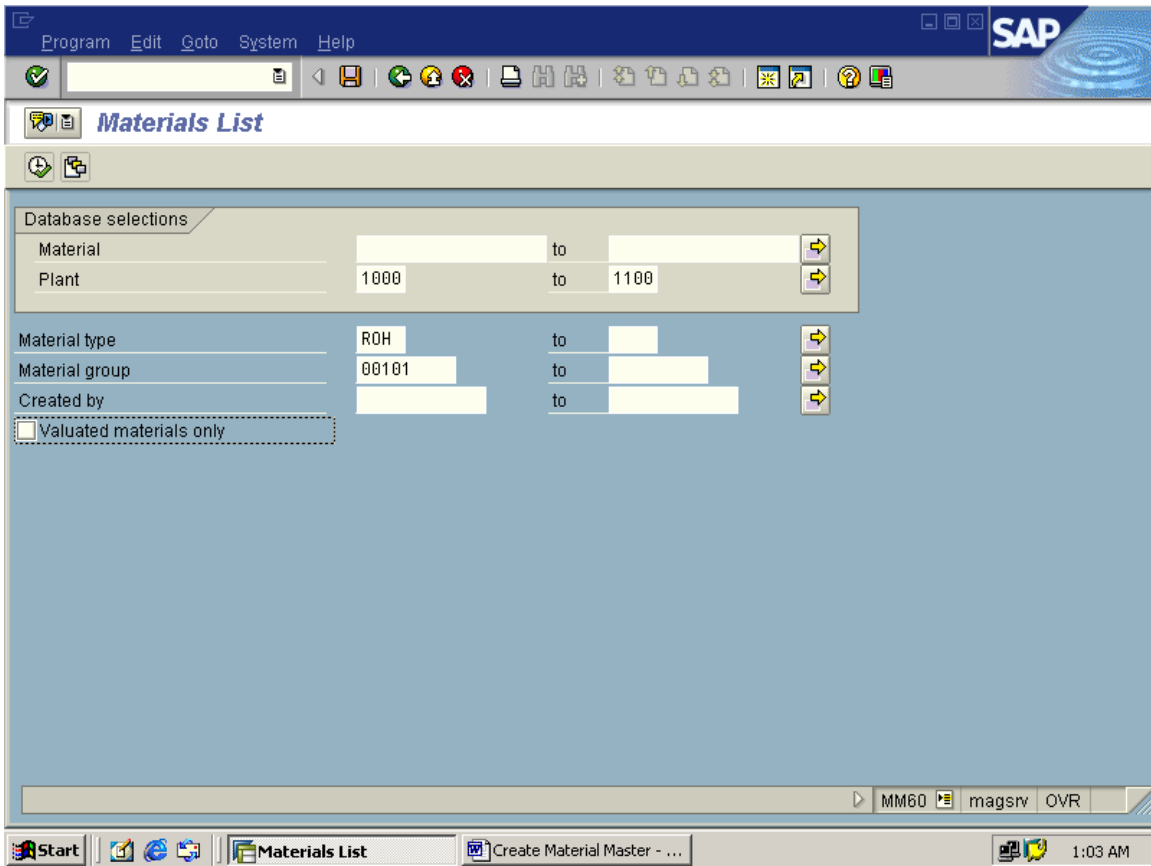
Materials List

Material Description	Plant	Changed	Type	MatlGroup	Un	PG	ABC	MRP	VIC1	Pr.	ctr1	Price	Cur.	per
408 Turbine	1000	01.09.05	ROH	00101	EA				3001	V		10,000.00	EUR	1
1019 A1 8082	1000	00.00.00	ROH	00101	KG				3000	S		10.00	EUR	1
1022 A1 8083	1000	00.00.00	ROH	00101	KG				3000	S		10.00	EUR	1
1090 Coke	1000	01.10.05	ROH	00101	TO	002			3001	V		1,200.00	EUR	1
IRON ORE Iron Ore Grade - A	1000	01.10.05	ROH	00101	KG	001			3000	V		1,000.00	EUR	1
J19 IH	1000	00.00.00	ROH	00101	EA			PD	3000	V		5.11	EUR	1
MAG Test materialforbatch det	1000	00.00.00	ROH	00101	EA	001			3000	V		10.00	EUR	1

MM60 magsrv OVR

Start Materials List Create Material Master - ... 1:03 AM

case 2: To display materials created with any view



then execute

SAP Materials List

Material Description	Plant	Changed	Type	MatlGroup	Un	PG	ABC	MRP	VIC1	Pr.	ctr1	Price	Cur.	per
408 Turbine	1000	01.09.05	ROH	00101	EA				3001	V		10,000.00	EUR	1
1019 A1 8082	1000	00.00.00	ROH	00101	KG				3000	S		10.00	EUR	1
1022 A1 8083	1000	00.00.00	ROH	00101	KG				3000	S		10.00	EUR	1
1090 Coke	1000	01.10.05	ROH	00101	TO	002			3001	V		1,200.00	EUR	1
1090 Coke	1100	01.10.05	ROH	00101	TO	002						0.00		0
IRON ORE	1000	01.10.05	ROH	00101	KG	001			3000	V		1,000.00	EUR	1
Iron Ore Grade - A														
IRON ORE	1100	01.10.05	ROH	00101	KG	003						0.00		0
Iron Ore Grade - A														
J19 TH	1000	00.00.00	ROH	00101	EA				PD 3000	V		5.11	EUR	1

MM60 magsrv OVR

Start | Materials List | Create Material Master - ... | 1:04 AM

Extending the material views collectively for n+ materials and for different plants
MM50

Extend Material View(s): Initial Screen

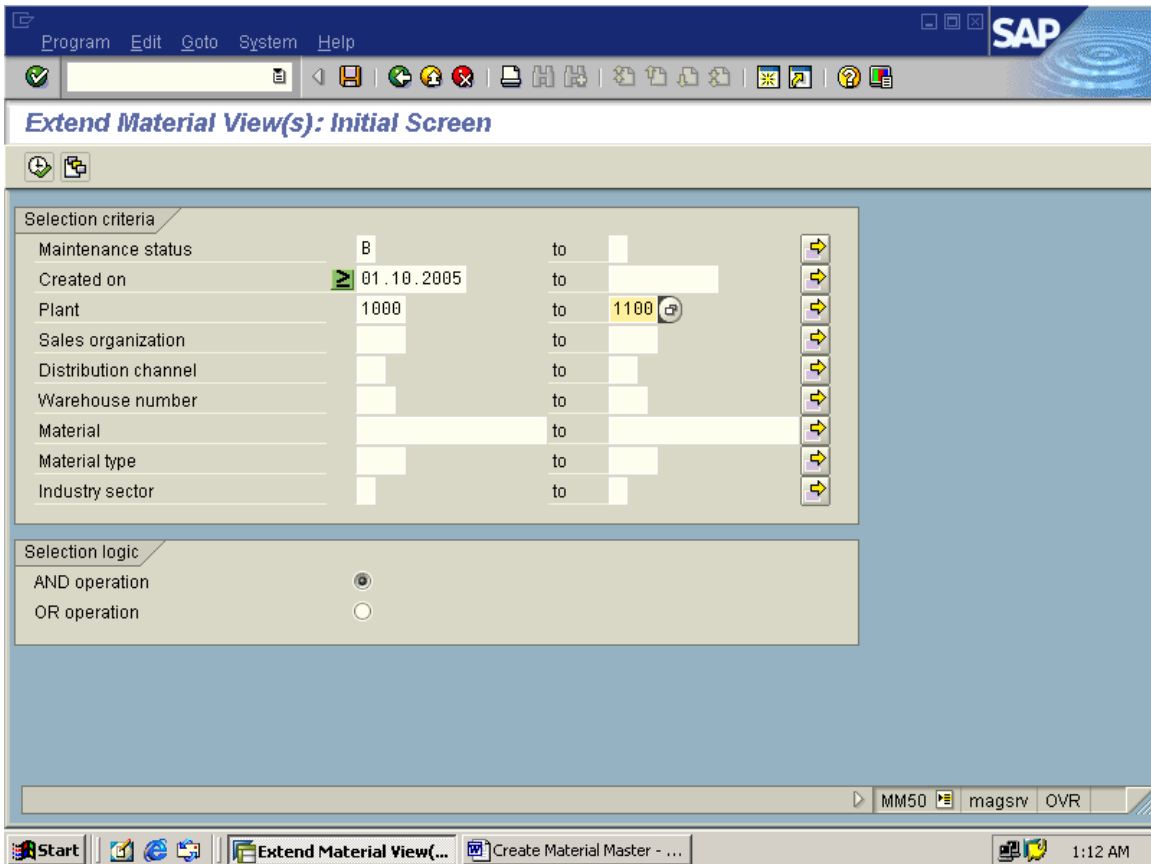
Selection criteria

Maintenance status	<input type="checkbox"/>	to	<input type="checkbox"/>	<input type="button" value="↔"/>
Created on	<input type="checkbox"/>	to	<input type="checkbox"/>	<input type="button" value="↔"/>
Plant	<input type="checkbox"/>	to	<input type="checkbox"/>	<input type="button" value="↔"/>
Sales organization	<input type="checkbox"/>	to	<input type="checkbox"/>	<input type="button" value="↔"/>
Distribution channel	<input type="checkbox"/>	to	<input type="checkbox"/>	<input type="button" value="↔"/>
Warehouse number	<input type="checkbox"/>	to	<input type="checkbox"/>	<input type="button" value="↔"/>
Material	<input type="checkbox"/>	to	<input type="checkbox"/>	<input type="button" value="↔"/>
Material type	<input type="checkbox"/>	to	<input type="checkbox"/>	<input type="button" value="↔"/>
Industry sector	<input type="checkbox"/>	to	<input type="checkbox"/>	<input type="button" value="↔"/>

Selection logic

AND operation

OR operation



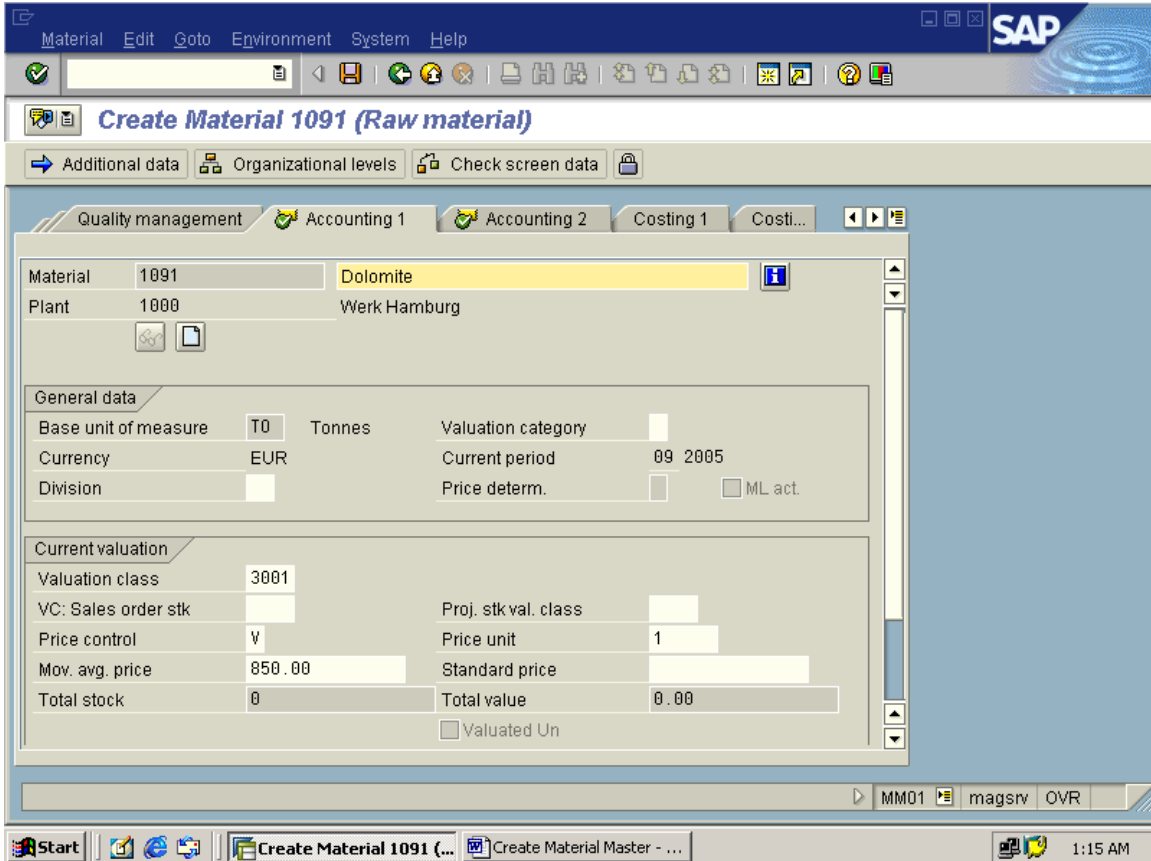
CLICK ON execute icon

Extend Material View(s): Overview

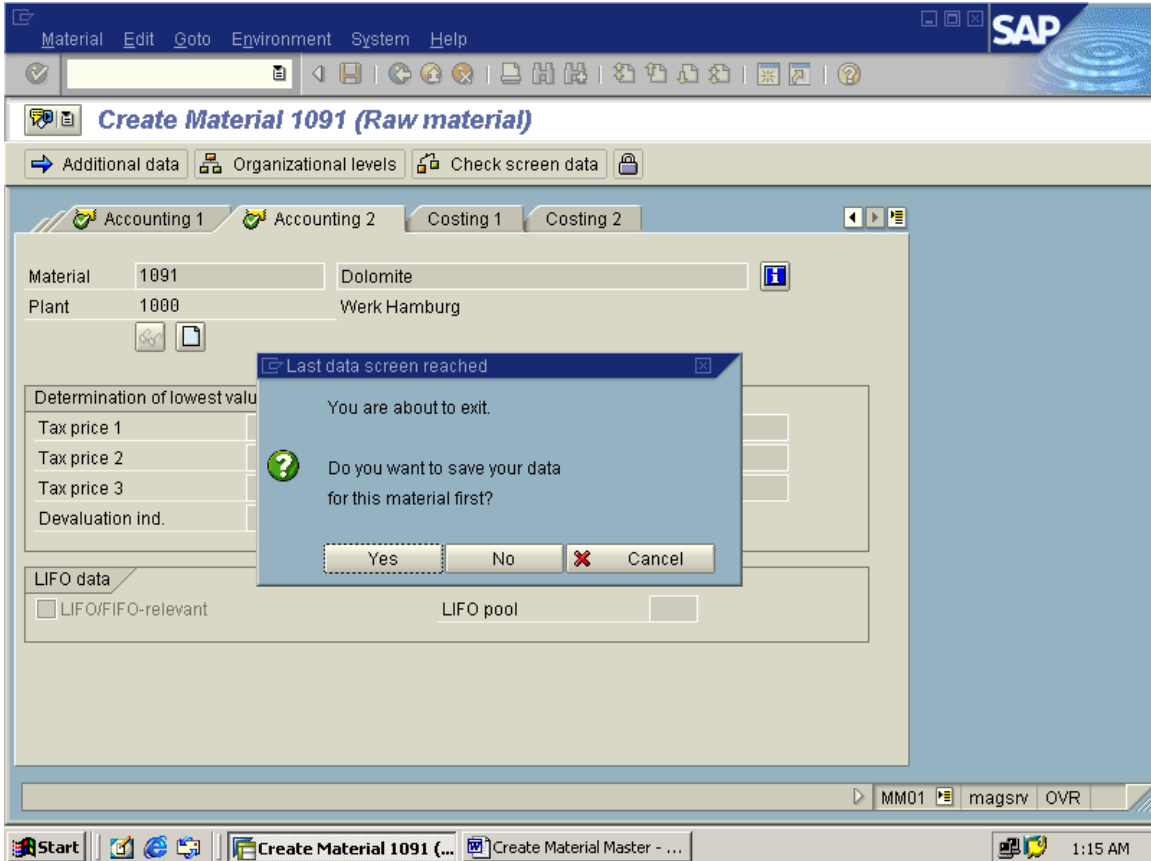
Maintain materials All Current block All Current block Reference/organization

Maintain materials (Shift+F1)

	S	Created on	Material	MTyp	I	CoCd	Plnt	SLoc	SOrg	DC	WhN	Material description
<input checked="" type="checkbox"/>	B	01.10.2005	1091	ROH	M		1000					Dolomite
<input checked="" type="checkbox"/>	B	01.10.2005	1090	ROH	M		1100					Coke
<input checked="" type="checkbox"/>	B	01.10.2005	IRON ORE	ROH	M		1100					Iron Ore Grade - A



press enter, takes to accounting2 screen press enter



continue the process till completion of all selected line items

The screenshot shows the SAP 'Extend Material View(s): Overview' window. The window title is 'Extend Material View(s): Overview'. Below the title bar, there are several icons and a search field. The main area contains a table with the following columns: 'S', 'Created on', 'Material', 'MTyp', 'I', 'CoCd', 'Plnt', 'SLoc', 'SOrg', 'DC', 'WhN', and 'Material description'. The table contains three rows of data:

S	Created on	Material	MTyp	I	CoCd	Plnt	SLoc	SOrg	DC	WhN	Material description
<input checked="" type="checkbox"/>	01.10.2005	1091	ROH	M		1000					Dolomite
<input checked="" type="checkbox"/>	01.10.2005	1090	ROH	M		1100					Coke
<input checked="" type="checkbox"/>	01.10.2005	IRON ORE	ROH	M		1100					Iron Ore Grade - A

At the bottom of the window, there is a status bar that says 'The selected materials have been processed'. The taskbar at the bottom shows the 'Start' button, several icons, and the text 'Extend Material View(...)' and 'Create Material Master - ...'. The system clock shows '1:17 AM'.

Extending the material information to different storage locations : MMSC

Enter Storage Locations Collectively: Initial Screen

Material..
Plant....

List control
 List all existing storage locations
 List extendable storage locations only

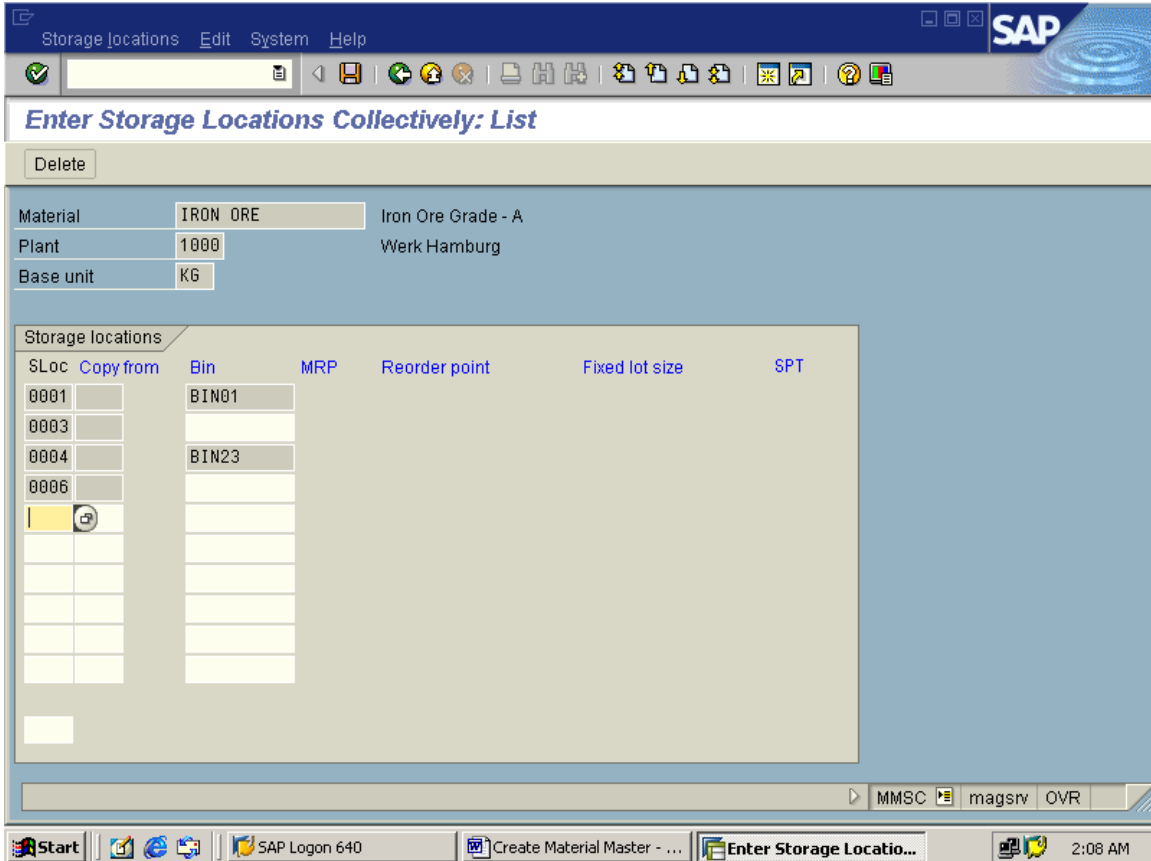
Create change documents

Enter Storage Locations Collectively: Initial Screen

Material.. iron ore
Plant.... 1000

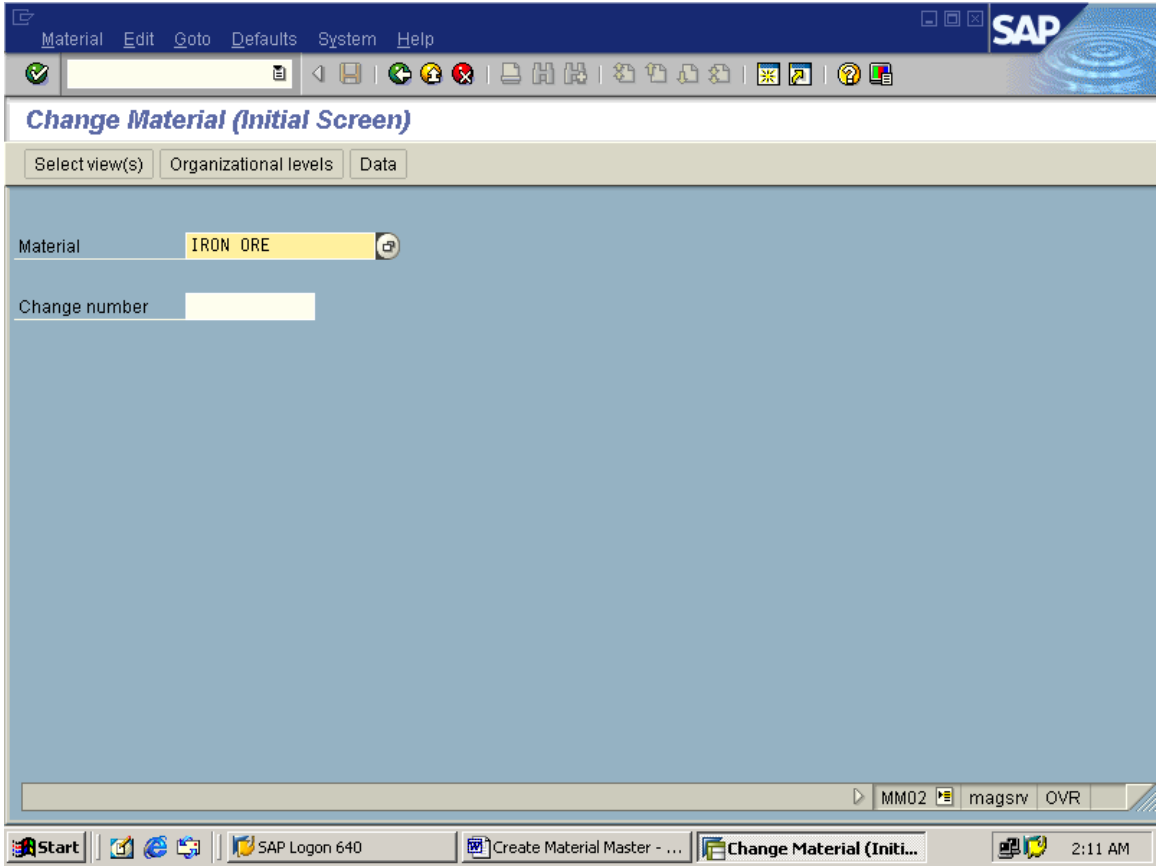
- List control
- List all existing storage locations
 - List extendable storage locations only

Create change documents



save the entries

Change the existing material information: MM02



Change Material (Initial Screen)

Select view(s) Organizational levels Data

Material IRON ORE

Change number

Select View(s)

- Basic Data 1
- Basic Data 2
- Purchasing
- Foreign Trade: Import Data
- Purchase Order Text
- General Plant Data / Storage 1
- General Plant Data / Storage 2
- Accounting 1
- Accounting 2
- Plant Stock
- Storage Location Stock

View selection only on request

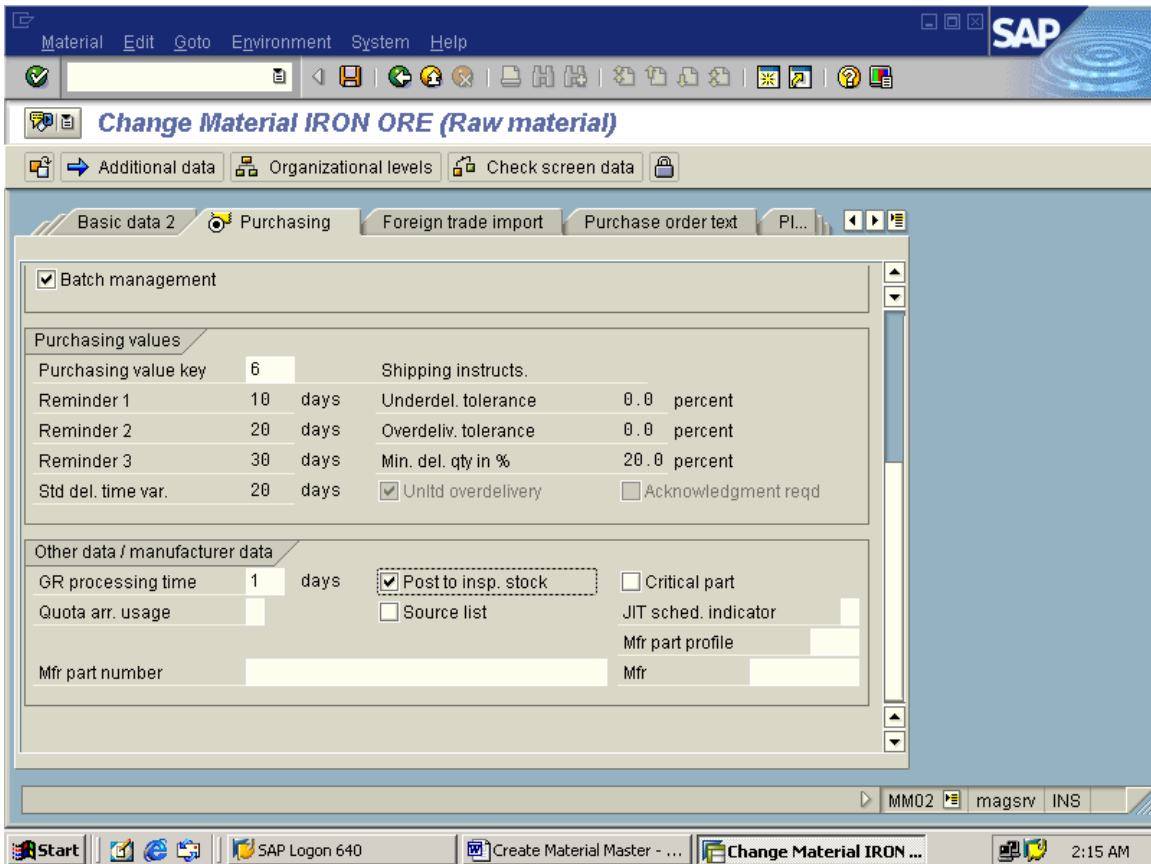
Organizational levels Data Default values

Organizational levels (F6) MM02 magsrv OVR

Change Material (Initial Screen)

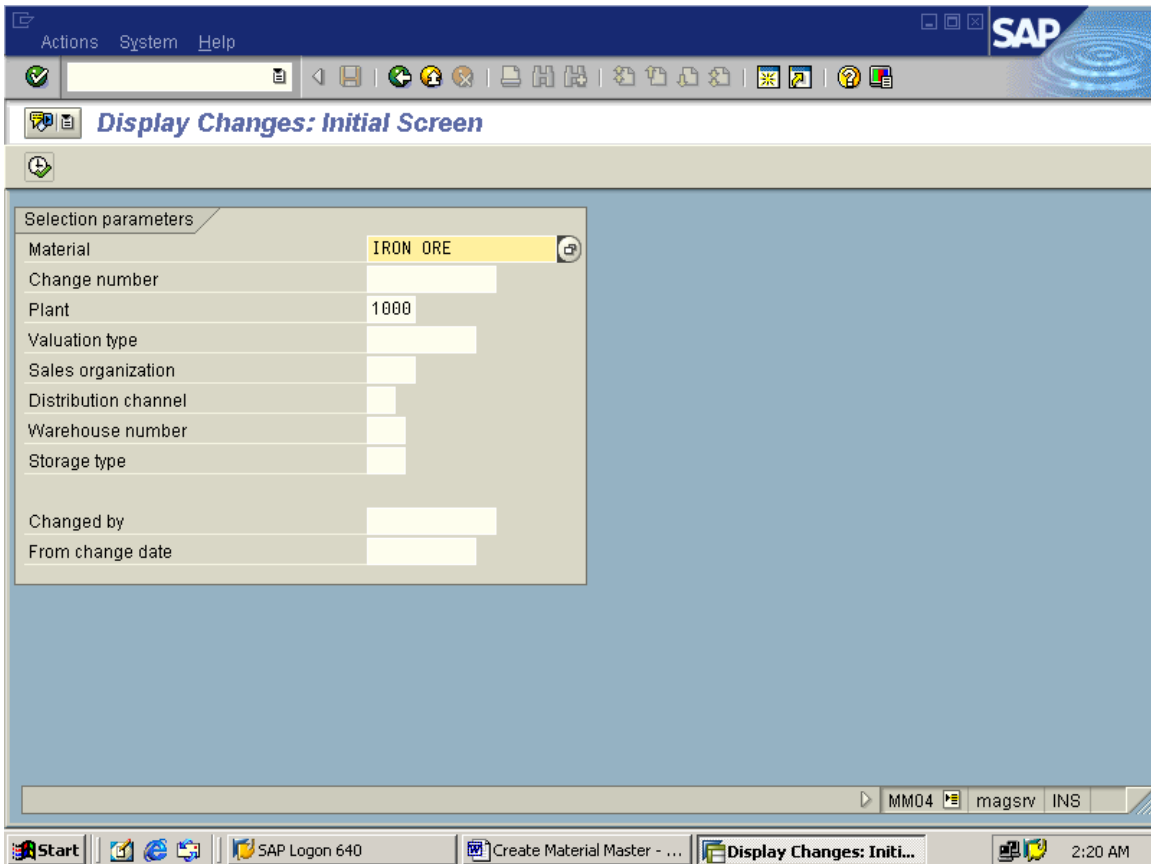
Select view(s) Organizational levels Data

Material	IRON	Organizational Levels
Change number		
Organizational levels		
Plant	1000	muthu&co
<input checked="" type="checkbox"/> Org. levels/profiles only on request		
<input checked="" type="checkbox"/>	Select view(s)	<input type="checkbox"/> Default values <input type="checkbox"/>



DO THE changes required and save

Display the changes history: MM04



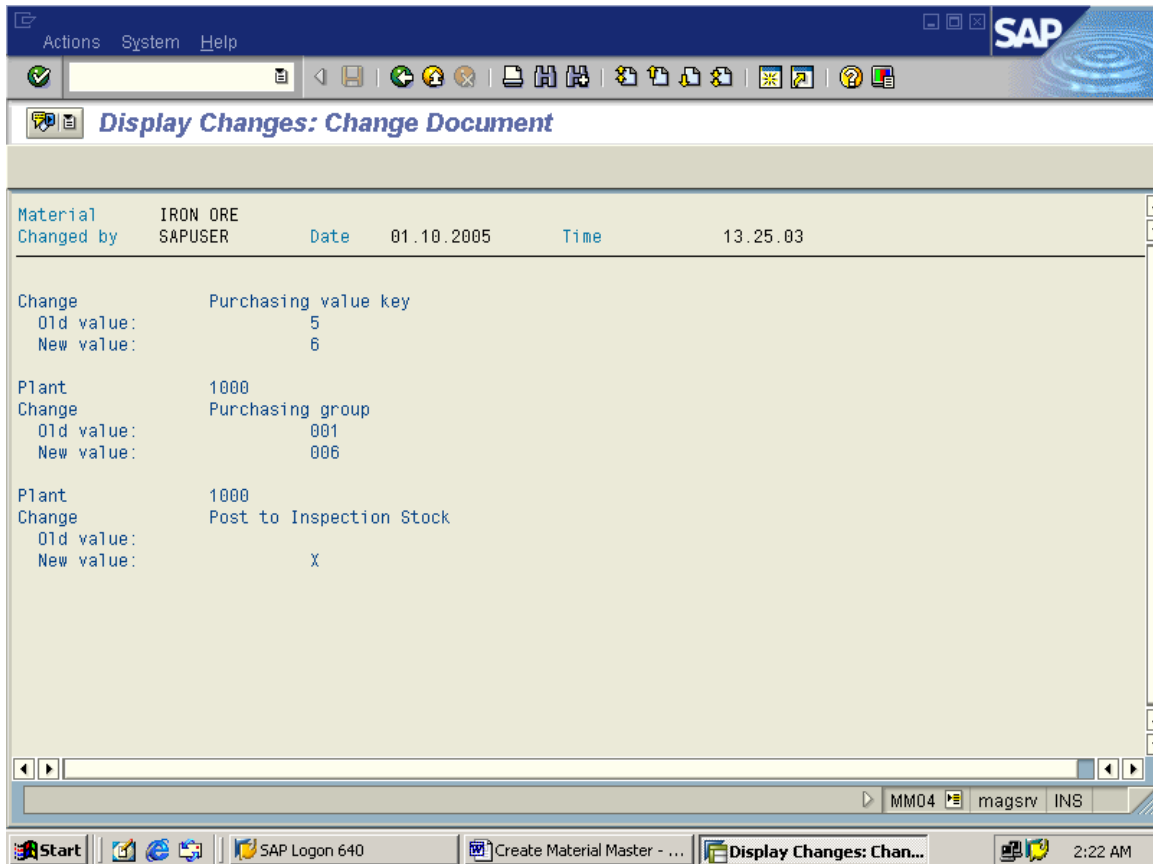
THEN CLICK ON EXECUTE

Display Changes: Material Overview

Dis Choose (F2) Documents

List of all change documents for material IRON ORE

Date	Time	Changed by	Change number	TCode
01.10.2005	13.25.03	SAPUSER		MM02
01.10.2005	12.04.05	SAPUSER		MM01
01.10.2005	11.52.35	SAPUSER		MM01



List of tables relevant to Material master:

General Material Data	MARA
Material Descriptions	MAKT
Plant Data for Material	MARC
Material Valuation	MBEW
Storage Location Data for Material	MARD
Units of Measure for Material	MARM
Sales Data for Material	MVKE
Forecast Parameters	MPOP
Planning Data	MPGD_MASS
Material Data for Each Storage Type	MLGT
Material Data for Each Warehouse Number	MLGN
Tax Classification for Material	MLAN