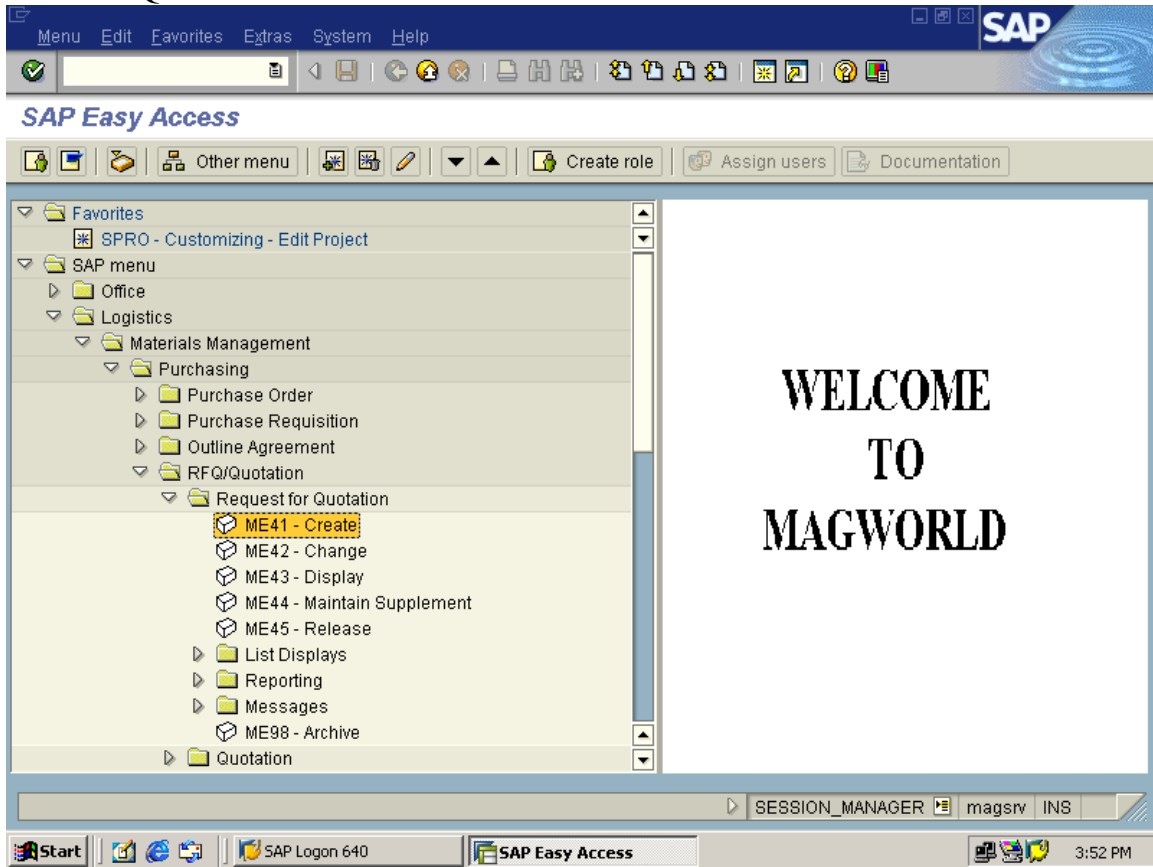


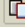



Create RFQ:



Create RFQ : Initial Screen

   Reference to PReq  Ref. to outl. agreement

RFQ type	AN
Language key	EN
RFQ date	08.10.2005
Quotation deadline	12.10.2005
RFQ	

Organizational data

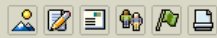
Purch. organization	1000
Purchasing group	001

Default data for items

Item category	
Delivery date	T
Plant	
Storage location	
Material group	
Req. tracking number	

ME41 magsrv INS

Create RFQ : Header Data



RFQ	<input type="text"/>	Company code	1000	Purchasing group	001
RFQ type	AN			Purch. organization	1000
Vendor	<input type="text"/>				

Administrative fields					
RFQ date	08.10.2005	Item interval	10	Coll. no.	RFQ1001
Language	EN	Sub-item inter.	1	Quot.dead.	12.10.2005
Validity start	<input type="text"/>	Validity end	<input type="text"/>	Applic. by	<input type="text"/>
		Warranty	<input type="text"/>	Bindg.per.	<input type="text"/>

Terms of delivery and payment	
Targ. val.	<input type="text"/>

Reference data			
Your reference	<input type="text"/>	Salesperson	<input type="text"/>
Our reference	<input type="text"/>	Telephone	<input type="text"/>

Make an entry in all required fields ME41 magsrv INS

RFQ Edit Header Item Environment System Help

Create RFQ : Item Overview

RFQ: [] RFQ type: AN RFQ date: 08.10.2005
 Vendor: [] Quot.dead: 12.10.2005

RFQ items

Item	Material	Short text	RFQ quantity	O...	C	Deliv. date	Matl group	PInt	SLoc	D	T...
10	1090	Coke	1,000	T	D	17.10.2005	00101	1000			
20	1090	Coke	500	T	D	17.10.2005	00101	1100			
30	1091	Dolomite	250	T	D	17.10.2005	00101	1000			
40					D						
50					D						
60					D						
70					D						
80					D						
90					D						
100					D						
110					D						
120											

Item: 10

ME41 magsrv INS

Start SAP Logon 640 Create RFQ : Item Ove... RFQ - Microsoft Word 4:11 PM

To enter text related information:

Select the line item for which we need to maintain the information

Create RFQ : Item

RFQ

Vendor

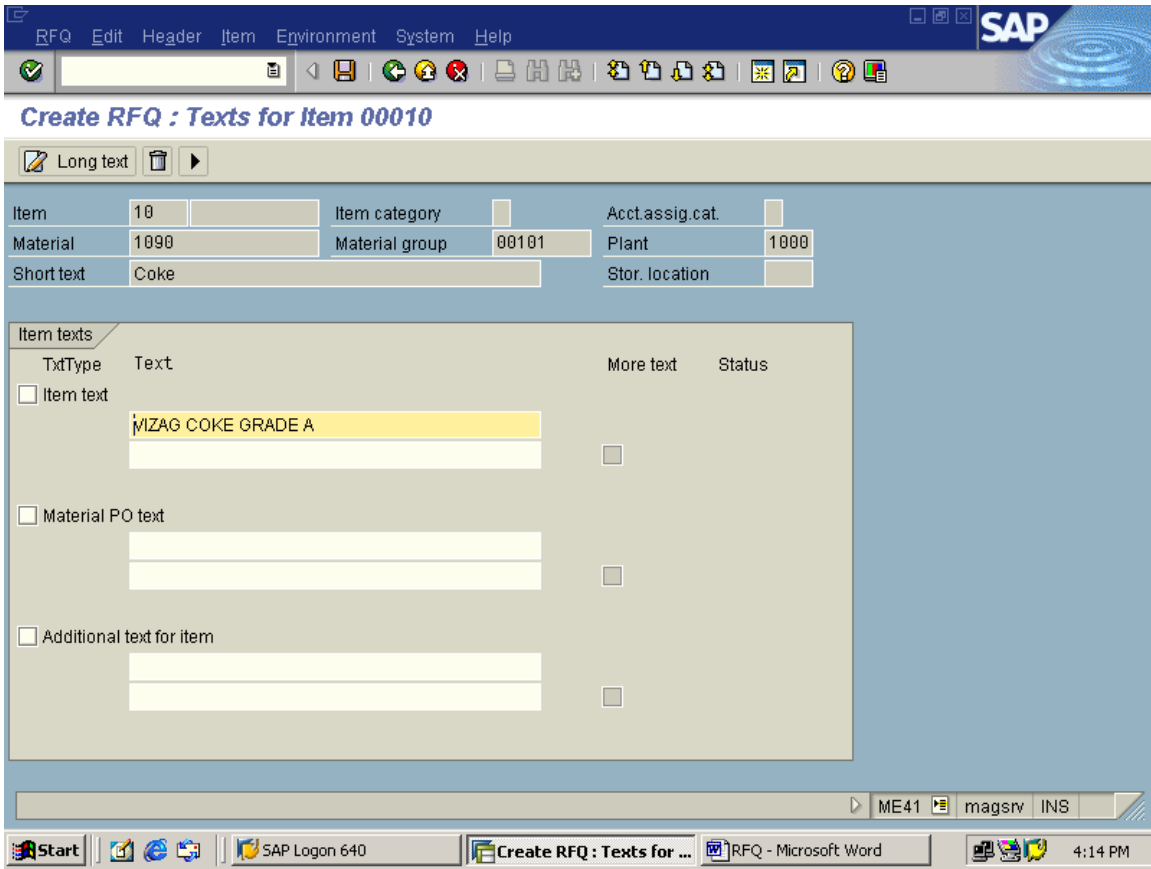
RFQ items

- Details F2
- Delivery schedule Shift+F5
- Conditions
- Services Shift+F4
- Texts
 - Text overview Ctrl+F10
 - Long text screen
 - Adopt text
 - Delete text
- Statistics
- Configuration
- More functions

Item	Material	Short text	RFQ quantity	O...	C	Deliv. date	Matl group	PInt	SLoc	D	T...
10	1090	Coke	1,000	T0	D	17.10.2005	00101	1000			
20	1090	Coke	500	T0	D	17.10.2005	00101	1100			
30	1091	Dolomite	250	T0	D	17.10.2005	00101	1000			
40					D						
50					D						
60					D						
70					D						
80					D						
90					D						
100					D						
110					D						
120					D						

Item 10

ME41 magsrv INS



Go back

To send the above information to different vendors, click on Vendor address icon

Create RFQ : Item Overview



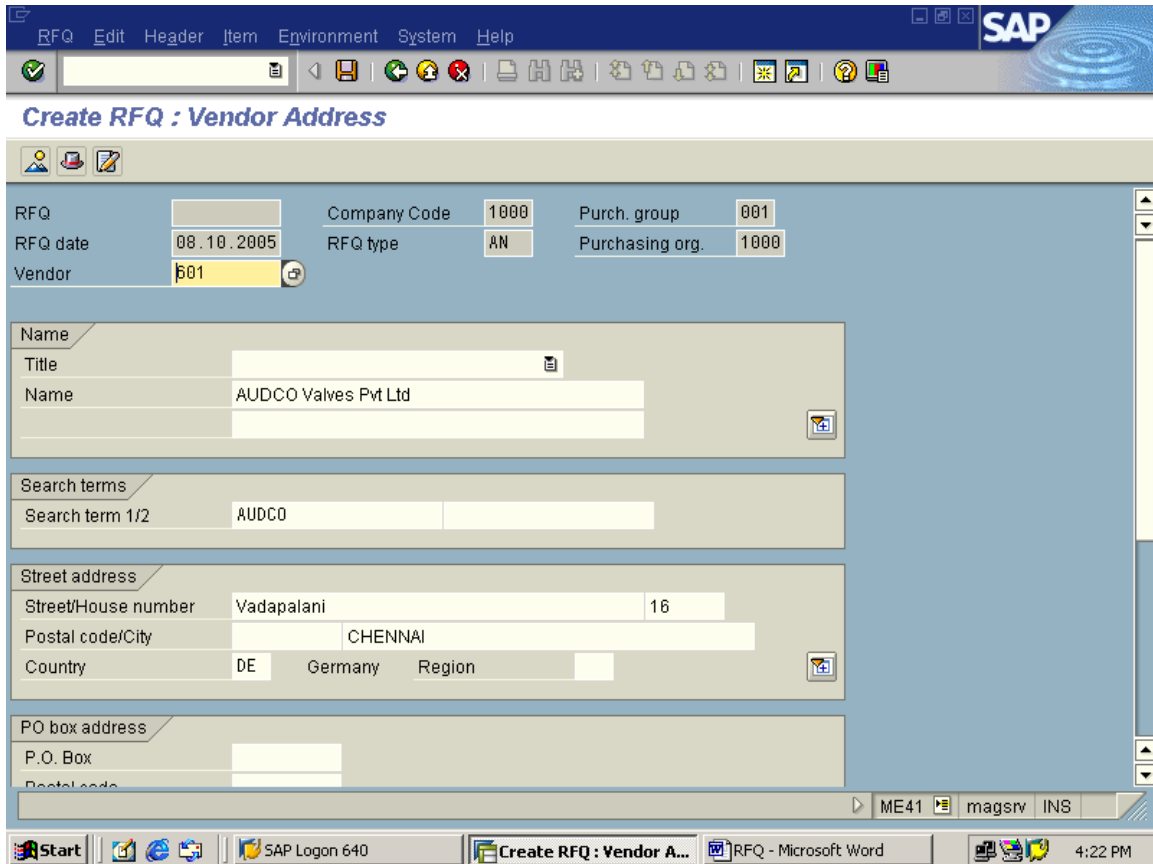
RFQ Vendor address (F7) AN RFQ date 08.10.2005
 Vendor Quot.dead. 12.10.2005

RFQ items

Item	Material	Short text	RFQ quantity	O...	C	Deliv. date	Matl group	PInt	SLoc	D	T...
10	1090	Coke	1,000	T0	D	17.10.2005	00101	1000			
20	1090	Coke	500	T0	D	17.10.2005	00101	1100			
30	1091	Dolomite	250	T0	D	17.10.2005	00101	1000			
40					D						
50					D						
60					D						
70					D						
80					D						
90					D						
100					D						
110					D						
120					D						

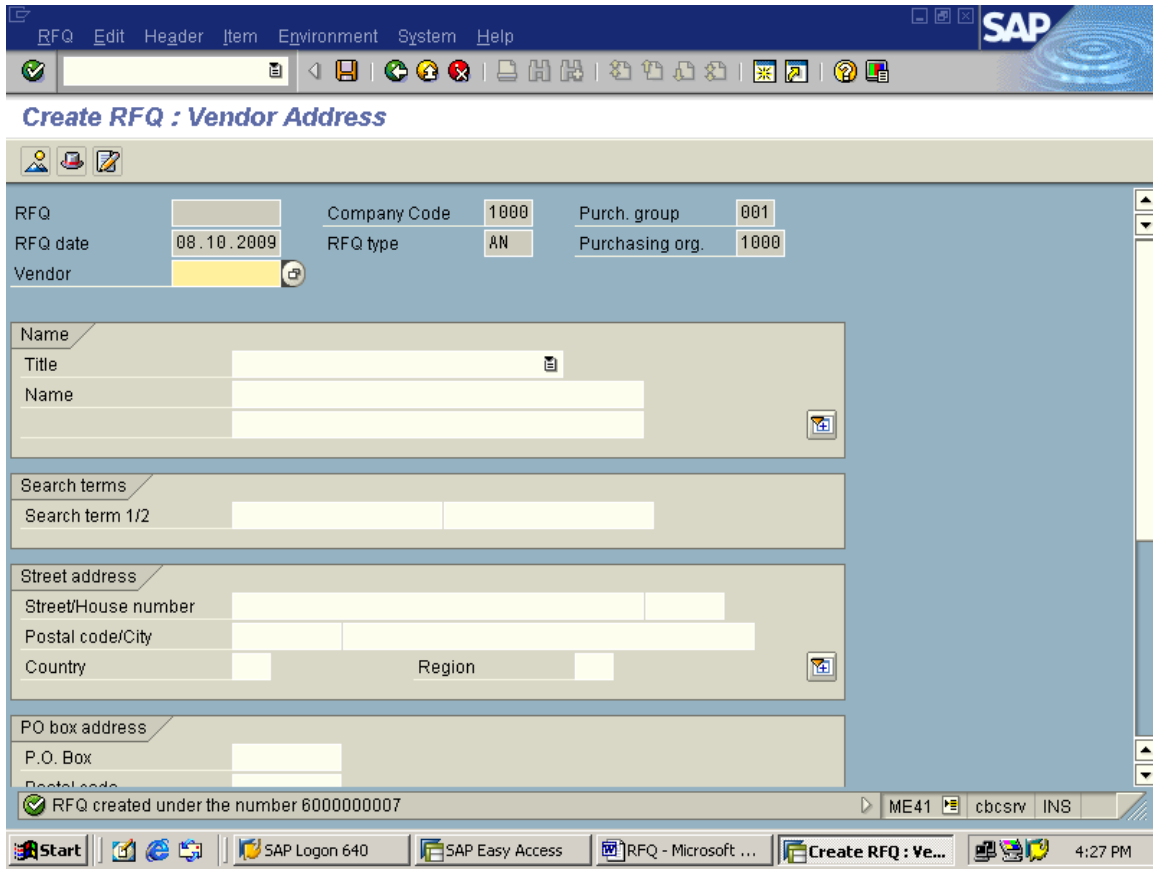
Item 10

ME41 magsrv INS



select the vendor and press enter

then save the details



repeat the same process to remaining vendors

Change RFQ: ME42

SAP Easy Access

   Other menu  Create role  Assign users  Documentation

- ▼ Favorites
 - ✳ SPRO - Customizing - Edit Project
- ▼ SAP menu
 - ▶ Office
 - ▼ Logistics
 - ▼ Materials Management
 - ▼ Purchasing
 - ▶ Purchase Order
 - ▶ Purchase Requisition
 - ▶ Outline Agreement
 - ▼ RFQ/Quotation
 - ▼ Request for Quotation
 - ME41 - Create
 - ME42 - Change**
 - ME43 - Display
 - ME44 - Maintain Supplement
 - ME45 - Release
 - ▶ List Displays
 - ▶ Reporting
 - ▶ Messages
 - ME98 - Archive
 - ▶ Quotation

**WELCOME
TO
MAGWORLD**

SESSION_MANAGER | magsrv | INS

Change RFQ : Initial Screen



RFQ

60000000009

ME42 cbcsv INS

RFQ Edit Header Item Environment System Help

Change RFQ : Item Overview

RFQ: 6000000009 RFQ type: AN RFQ date: 08.10.2009
 Vendor: 6 SAMPLE Quot.dead: 13.10.2005

RFQ items

Item	Material	Short text	RFQ quantity	O...	C	Deliv. date	Matl group	PInt	SLoc	D	T...
10	515	valve coupler	1,000	PAC	D	17.10.2005	002	1000			
20		XEROX M/C	1	EA	D	17.10.2005	002	1000			
30					D	17.10.2005	002	1000			
40					D	17.10.2005	002	1000			
50					D	17.10.2005	002	1000			
60					D	17.10.2005	002	1000			
70					D	17.10.2005	002	1000			
80					D	17.10.2005	002	1000			
90					D	17.10.2005	002	1000			
100					D	17.10.2005	002	1000			
110					D	17.10.2005	002	1000			
120					D	17.10.2005	002	1000			

Item: 10

ME42 cbcsvr INS

Start SAP Logon 640 SAP Easy Ac... RFQ - Micros... Change RF... 4:42 PM

SAVE THE DETAILS